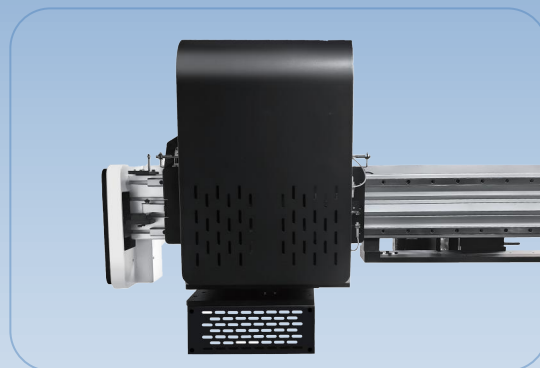




Book Edge Digital Printer





标准机型技术参数 STANDARD MODEL TECHNICAL PARAMETERS

型号名称 Model	HK-SP1200WA-BE
最大打印宽度 Print Width	33mm,66mm,99mm
最大打印高度 Book Height	350mm(可定制) (Can Customize)
打印精度 Printing Accuracy	1200DPI
打印介质 Print Medium	书边 Book Edge
打印速度 Print Speed	0-15m/min
油墨类型 Ink Type	水性颜料/染料墨水 Water-based Pigment ink or dye ink
颜色 Color	蓝红黄黑CMYK
图像格式 Image Format	JPG, PDF, PSD, BMP, TIFF, GIF, TGA, EPS and so on
操作系统 Operating System	Win7/Win10/Win11
语言界面 Language Interface	可定制 Chinese/English (any other language can be customized)
数据接口 Data Interface	千兆网络接口传输 Gigabit network interface transmission
工作环境 Working Environment	温度0-45℃ 相对湿度20%-80% Temperature 0-45℃ Relative Humidity 20%-80%
工作功率 Working Power	3000W
电压 Voltage	AC 110V/220V 50/60HZ
机器尺寸 Printer Dimension	190*160*180CM
机器重量 Printer Weight	500KG

**标准机型技术参数 STANDARD MODEL TECHNICAL PARAMETERS**

型号名称 Model	HK-SP1200WA-BH
最大打印宽度 Print Width	218mm
最大打印高度 Book Height	350mm(可定制) (Can Customize)
打印精度 Printing Accuracy	1200DPI
打印介质 Print Medium	书边 Book Edge
打印速度 Print Speed	0-15m/min
油墨类型 Ink Type	水性颜料/染料墨水 Water-based Pigment ink or dye ink
颜色 Color	蓝红黄黑CMYK
图像格式 Image Format	JPG, PDF, PSD, BMP, TIFF, GIF, TGA, EPS and so on
操作系统 Operating System	Win7/Win10/Win11
语言界面 Language Interface	可定制 Chinese/English (any other language can be customized)
数据接口 Data Interface	千兆网络接口传输 Gigabit network interface transmission
工作环境 Working Environment	温度0-45℃ 相对湿度20%-80% Temperature 0-45℃ Relative Humidity 20%-80%
工作功率 Working Power	480W
电压 Voltage	AC 110V/220V 50/60HZ
机器尺寸 Printer Dimension	190*120*165CM
机器重量 Printer Weight	450KG

高效清洁系统 Efficient Cleaning System

配备吹气清洁系统,在打印前清理书边表面碎屑、杂质,为高质量打印效果奠定基础。

Book edge digital printer is equipped with a blowing cleaning system, which cleans the surface of the book edge of debris and impurities before printing, laying the foundation for high-quality printing results.

精准运输定位 Accurate Transportation and Positioning

同步输送带,伺服电机,实现书本稳定高效传输;软件支持自动测高测厚功能,快速精准定位书籍位置。适配不同尺寸的书籍。

Synchronous conveyor belt, servo motor, to achieve stable and efficient transmission of books; Software supports automatic height and thickness measurement function, fast and accurate positioning of books. Adapt to different sizes of books.

卓越打印性能 Excellent printing performance

- 支持 CMYK 四色、渐变、多色套印。
- 1200dpi 高精度打印,图案细腻生动。
- 高速生产,每分钟 1200 面的打印速度,轻松应对大批量订单。
- Supports CMYK four-color, gradient and multi-color overprinting.
- 1200dpi high-precision printing, detailed and vivid patterns.
- High-speed production, 1200 sides printing speed, easy to cope with high-volume orders.



智能书本发料系统 Intelligent book feeding system

自动适配书本厚度调节发料口大小,实现无卡顿自动发料,兼容不同规格书本。

配备双重传感器监测,实时感应传输路径障碍物,遇阻立即停机,有效避免书本磕碰导致打印头损坏。

Book edge printer can automatically adapt to the thickness of the book to adjust the size of the feeding port, realizing jam-free automatic feeding, compatible with different specifications of books.

Equipped with dual sensor monitoring, real-time sensing transmission path obstacles, encounter obstacles immediately stop, effectively avoiding the book bumps lead to print head damage.

灵活性高 兼容性高 High flexibility and compatibility

支持单张材料、单本圆角方角书口多本套装书书口印刷。

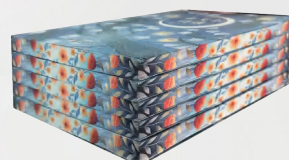
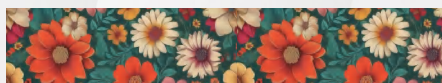
Support single sheet of material, single rounded square corner book mouth, multiple sets of books book mouth printing

工作流程 Workflow

使用PS或其他图片处理软件进行图片的设计,通过RIP软件调整生成PRN文件,导入控制软件后直接进行打印即可。

Use PS or other image processing software to design the image, adjust the RIP software to generate the PRN file, and then import it into the control software to print directly.

打印效果展示 Printing effect



扫码看视频 Scan the code to watch the video

客户打印案例和打印测试视频

Watch the customer's printed case and the printed test video.





公司简介 Company Profile



北京上富锦瑞科技有限公司

RobotJet Co., Ltd. 总部位于北京, 是中国领先的工业喷墨打印系统及设备供应商。公司专注喷墨打印领域, 构建了涵盖研发、生产、销售及售后的全链路服务体系, 可提供专业高效的一站式解决方案。

基于对微压电和热发泡印刷控制技术的深刻理解, 公司形成了成熟解决方案, 产品包括微压电水墨、UV 系列和热发泡页宽系列打印设备。其产品性能优良, 不仅是欧洲书边机公司的板卡供应商, 自产书边印刷机也畅销国内外, 出口至欧洲、美洲、亚洲和中东等地区。

目前, 公司拥有 19 项发明专利、10 项软件著作权专利, 产品通过 ISO9001 质量管理体系认证和欧盟 CE 认证。始终秉持合作开放、互利互惠、产品至上、服务优良的经营理念, 致力于为客户提供优质产品, 与业界共谋发展。

RobotJet Co., Ltd., headquartered in Beijing, is a leading supplier of industrial inkjet printing systems and equipment in China. The company focuses on the field of inkjet printing and has built a full-link service system covering R&D, production, sales and after-sales, providing professional and efficient one-stop solutions.

Based on a deep understanding of micro-piezoelectric and thermal foaming printing control technology, the company has formed a mature solution, and its products include micro-piezoelectric ink, UV series and thermal foaming page width series printing equipment. Its products have excellent performance. It is not only a board supplier for European book edge machine companies, but also its self-produced book edge printing machines are sold well at home and abroad, exported to Europe, America, Asia and the Middle East.

At present, the company has 19 invention patents and 10 software copyright patents, and its products have passed ISO9001 quality management system certification and EU CE certification. Always adhering to the business philosophy of open cooperation, mutual benefit, product first and excellent service, we are committed to providing customers with high-quality products and seeking common development with the industry.

DISTRIBUTER ZA JUGOISTOČNU EVROPU:

TAURUS PRESS DOO

+381 64 1340740

ctp@cron.rs

www.cron.rs

SERBIA - BELGRADE

+385 99 4477468

ctp@cron.com.hr

www.cron.com.hr

CROATIA - ZAGREB