

**EUREKA
MACHINERY**

Version 2023

SHANGHAI EUREKA MACHINERY

ABOUT US



PREFACE

Eureka, together with affiliated factory of GW group, follow the latest international quality standard and technology to launch Eureka Brand Equipment including EF series folder gluer, series paper bag, EUFM automatic high speed flute laminator and S-28E three knife trimmer. We utilize the best production CNC equipment from international brand such as Mitsubishi, OKUMA, MAZAK to ensure accuracy of each part, endurance and excellent performance. All of our produces have CE certificate as well as complete safety device to reach redundant circuit control which have been accepted by worldwide customer and keep creating superb value for our customer and offer satisfactory after-sale service together through Eureka's dealer network.

In the future, Eureka will keep developing high efficiency automatic equipment and be committed to become your trustable partner for Chinese printing and packaging equipment. Eureka! Find What You Are Looking For!



CONTENT

PAGE	01		EF Series Automatic Folder Gluer
PAGE	13		EAPT Series Square Bottom Paper Bag Machine
PAGE	35		EJ Series Flat Bottom Paper Bag Machine
PAGE	45		EUFM Flute Laminator
PAGE	53		S28E Three knife Trimmer

EF-650/850/1100 Automatic Folder Gluer



EF-650/850/1100 Automatic Folder Gluer

»» Description:

- The machine takes the multi-groove belt transmission structure which can make low noise, stable operation and easy maintenance.
- 20mm frame for both sides to support stable running in high speed for carton and corrugated board.
- Modular design for easy adaptation to accommodate various boxes from food, pharma to cosmetic, electronics and so on.
- Feeding belt adopt several extra thick belt equipped with vibration motor to ensure continuous, accurate and automatic feeding.
- Alignment section as standard equipment to ensure proper feeding.
- Standard double side lower gluing tank with screw adjustment for convenient operation.
- Machine adopt touch screen and PLC control system with remote control, equipped with photocell counting and auto kicker marking system.
- Press section adopts special material with pneumatic pressure control, equipped with sponge belt to ensure perfect products.
- Remote control unit for easy operation



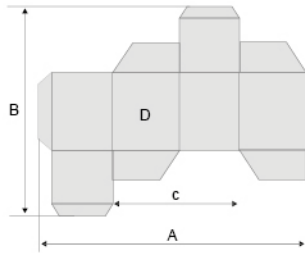
EF-650/850/1100 Automatic Folder Gluer



EF-650/850/1100 Automatic Folder Gluer

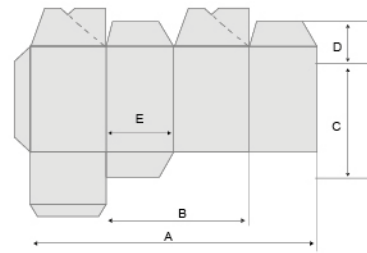
Specifications

	EF-650	EF-850	EF-1100
Maximum Paperboard Size	650X700mm	850X900mm	1100X900mm
Minimum Paperboard Size	100X50mm	100X50mm	100X50mm
Applicable Paperboard	Paperboard 250g-800g; Corrugated paper F, E		
Maximum Belt Speed	500m/min	500m/min	500m/min
Machine Length	16800mm	16800mm	16800mm
Machine Width	1350mm	1500mm	1800mm
Machine Height	1450mm	1450mm	1450mm
Total Power	18.5KW	18.5KW	18.5KW
Maximum Displacement	0.7m ³ /min	0.7m ³ /min	0.7m ³ /min
Total Weight	5500kg	6000kg	6500kg



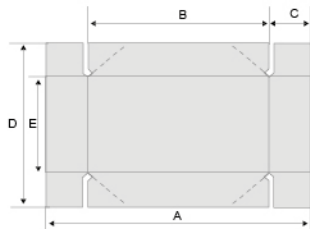
Straight-line boxes(Standard folding section) Unit: mm(inch)

	650	850	1100
A	100-650(3.94-25.6")	120-850(4.72-33.46")	120-1100(4.72-43.31")
B	100-700(1.97-27.56")	100-900(3.94-35.43")	100-900(3.94-35.43")
C	Min45(1.77")	Min55(2.17")	Min55(2.17")
D	Min10(0.39")	Min10(0.39")	Min10(0.39")



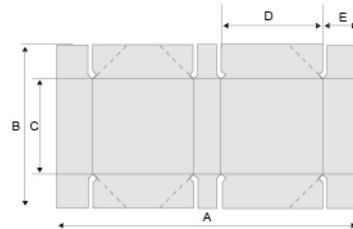
Crash-lock bottom boxes Unit: mm(inch)

	650	850	1100
A	160-650(6.30-25.6")	160-850(6.30-33.46")	160-1100(6.30-43.31")
B	Min75(2.95")	Min75(2.95")	Min75(2.95")
C	60-450(2.36-17.72")	60-450(2.36-17.72")	60-650(2.36-25.59")
D	25-150(0.98-5.91")	25-150(0.98-5.91")	25-150(0.98-5.91")
E	Min25(0.98")	Min25(0.98")	Min25(0.98")



4 corner boxes without lid Unit: mm(inch)

	650	850	1100
A	160-500(6.30-19.69")	160-700(6.30-27.56")	160-1100(6.30-39.37")
B	Min100(3.94")	Min100(3.94")	Min100(3.94")
C	Min30(1.18")	Min30(1.18")	Min30(1.18")
D	Max600(23.62")	Max600(23.62")	Max600(23.62")
E	Min100(3.94")	Min100(3.94")	Min100(3.94")



6 corner boxes Unit: mm(inch)

	650	850	1100
A	290-600(11.42-23.62")	290-850(11.42-33.46")	290-1100(11.42-43.30")
B	180-550(7.09-21.66")	180-550(7.09-21.66")	180-550(7.09-21.66")
C	Min100(3.94")	Min100(3.94")	Min100(3.94")
D	Min100(3.94")	Min100(3.94")	Min100(3.94")
E	Min30(1.18")	Min30(1.18")	Min30(1.18")

EF-650/850/1100 Automatic Folder Gluer

»» Configuration List

Various and flexible option can be selected for your machine which adapt to different production request.

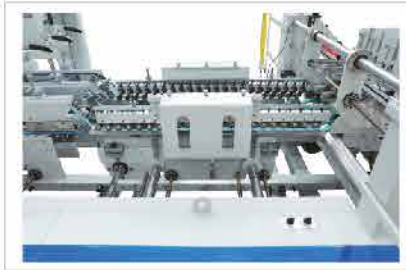
01	Feeder section	18	Vacuum feeder
02	Side register section	19	Ejection channel on trombone
03	Pre-folding section	20	Main touch screen with graphic design interface
04	Crash lock bottom section	21	Extra feeder and carrier belt
05	Lower gluing unit left side	22	Remote Control and Diagnose
06	Lower gluing unit right side	23	Plasma system with 3 guns
07	Grinder device with dust extractor	24	Memory function to save repetitive jobs
08	HHS 3 Guns cold glue system	25	Non-hook crash bottom device
09	Folding and closing section	26	Light barrier and safety device
10	Motorized adjustment	27	90 degree turning device
11	Pneumatic Press section	28	Adhesive tape attach
12	4 & 6-corner device	29	Pressing bearing roller from Japan NSK
13	Servo Driven Trombone unit	30	KQ 3 glue system with high pressure pump
14	Lock bottom squaring device at conveyor	31	Hand Pack unit
15	Pneumatic square device at conveyor	32	Prepile feeding system
16	Mini-box device	33	Mitsubishi PLC with remote diagnosis
17	LED display production		

* Feeder Section

- Feeder section has an independent motor drive system and keep synchronization with main machine.
- 7 pcs of 30mm feeding belt and 10mm metal plate to move laterally to set width.
- The embossed roller guides the feeding belt. Two side apron match the products design.
- Feeder section is equipped with three out-feeding blade to adjust according to the product sample.
- Vibration device keep paper feeding quickly, easily, continuously and automatically.
- Feeder section with 400mm height and brush roller anti-dust device ensure smooth paper feeding.
- The operator can operate feeding switch in any area of machine.
- Feeder belt can be equipped with sucking function(Optional).
- Independent monitor can inspect the performance at the tail of the machine.

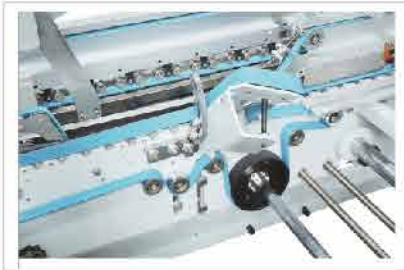


EF-650/850/1100 Automatic Folder Gluer



* Side register unit:

- The paper from feeding unit can be rectified at side register unit to ensure accurate feeding.
- The driven pressure can be adjusted up and down to fit with different thickness of board.



* Pre-fold section :

- The special design can pre-fold the first folding line at 180 degrees and the third line at 165 degrees that can makes box easier to open.
- 4 corner folding system with intelligent servo-motor technology. It allows accurate folding of all back flaps by means of hooks installed in two independent shafts controlled electronically.



* Crash lock bottom section

- Lock-bottom folding with flexible design and rapid operation.
- Crash-bottom can be finished together with 4 set of kits.
- 20 mm outer belts and 30mm bottom belts. Outer belts plate can be adjusted up and down to fit with different thickness of board by cam system.



* Lower glue unit

- Left and right glue unit are equipped with 2 or 4mm glue wheel available.



* Folding and closing section

- The second line is 180 degrees and the fourth line is 180 degrees.
- The special design of the transmission fold belt speed can be adjusted individually to correct box running direction to keep it straight.



* Motorized Adjustment

- Motorized adjustment can be equipped to achieve folding plate adjustment



* Pneumatic Press section

- Upper section can be moved back and forward depending of box length.
- Pneumatic pressure adjustment to keep uniform pressure
- Special extra sponge can be applied to press concave parts.
- In auto-mode, the speed of press section keep synchrony with main machine to rise consistency of production.



* 4 & 6-corner device

- Yasakawa servo system with motion module ensure high speed response to match high speed request.
- Independent touch screen facilitate the adjustment and make operation more flexible.



EF-650/850/1100 Automatic Folder Gluer



* Servo Driven Trombone unit

- Adopt photocell counting system with either "kicker" paper automatically or spray ink.
- Jam inspection machine
- Up belt running with active transmission
- Whole unit is driven by independent servo motor for adjustment of box interval as wish.



* Lock bottom squaring device at conveyor

- Square device can ensure the corrugated box square well, with motorized conveyer belt height adjustment.



* Pneumatic square device at conveyor

- Pneumatic square device with two carrier at conveyor can ensure carton box with wide but shallow shape to get perfect square.



* Minibox device

- Mini-box device can be equipped on machine easily as module to make mini box.



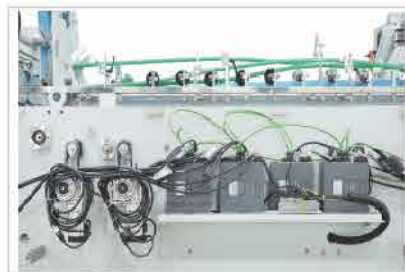
* Ejection channel on trombone

- Ejection gate can work together with all kinds of inspection system such as glue inspection, printing quality inspection and bar code inspection to achieve in-line high speed inspection.



* Main touch screen with graphic design interface

- Main touch screen with graphic design interface for convenient operation.



* Memory function to save repetitive jobs

- Up to 17 sets of servo motor memorize and orient the size of each plate.
- Independent touch screen facilitate to set the machine into the certain size against each saved order.



* NON-hook crash bottom device

- With special design slope, bottom of box can be crashed at high speed without conventional hook.



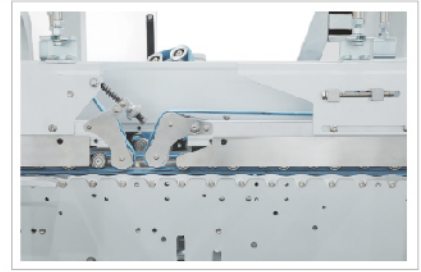
* Pressing bearing roller from Japan NSK

- Complete NKS bearing as press roller machine machine run smooth with low noise and long duration.



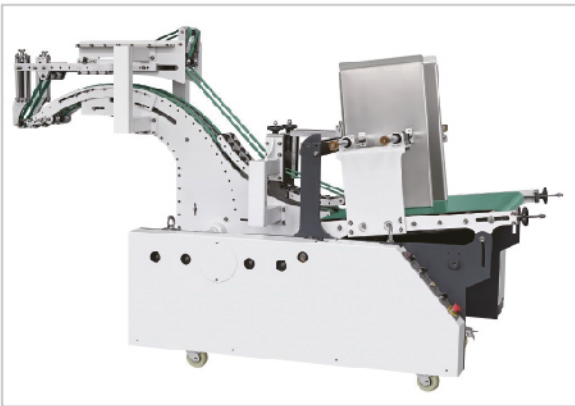
* Hand Pack unit

EF-650/850/1100 Automatic Folder Gluer



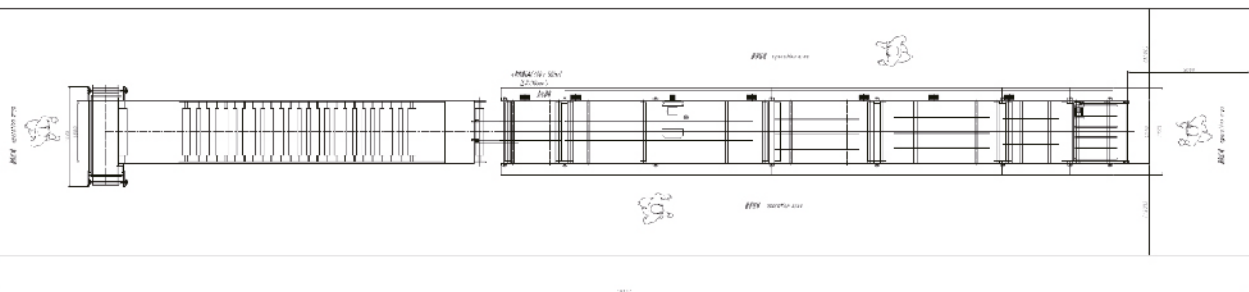
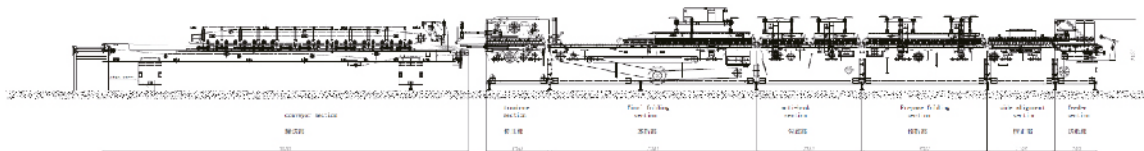
*** Light barrier and safety device**

- Full mechanical cover get rid of all possibility of injury.
- Leuze light barrier, latch type door switch as well as safety relay fulfil CE request with redundant circuit design .



*** Prepile Feeding System**

Machine layout



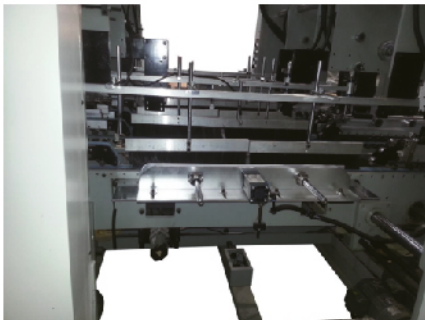
EFD-3200 High Speed Automatic Double-Pieces folder gluer



»» specification

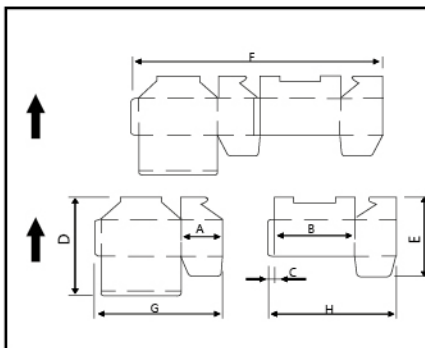
Paper range	corrugated E, C, B, A, five-layers corrugated Way of feeding: automatically continues feeding
Gluing speed	150m/min
Box width (one piece)	520mm-3200mm Box width
(Two pieces)	420MM-1400MM Size
(LxWxH/M)	18.8x4.2x2
Glue type	solute
Total weight	17T
Power	42kw

* Two-piece Splicing Section



The two-piece splicing part is a five-plate type structure with the upper belt as the main transmission type to ensure smooth and smooth paper feeding. Four sets of independent servo motors are positioned and spliced; each group of servo motors can independently adjust the required data on the touch-type terminal operating system. The pneumatic device is docked to the left and right groups. The docking station is equipped with a cold/hot dual-purpose glue spraying system, which serves as a fixed double-piece docking station. If the single-piece carton is produced, the double -chip stitching function can be turned off. An ordinary two-fold box can be produces.

	EFD1700		EFD1900		EFD2400		EFD2800		EFD3200	
	Max	min	Max	min	Max	min	Max	min	Max	min
A		100		100		100		100		100
B	650	240	750	240	880	240	1000	240	1200	240
C	50	30	50	30	50	30	60	30	60	30
D	1100		1100		1100		1100		1100	
E	1000	420	1000	420	1000	420	1000	420	1000	420
F	1640		1840		2340		2740		3140	
G		520		520		520		520		520
H		520		520		520		520		520



EF-1500/1700/2100/2800/3200

Corrugated board Series Folder Gluer



»» Description:

Model EF Corrugated board Series machine is multi-functional, mainly for medium package, including 300g -800g cardboard, 1mm-10mm corrugated package. Can produce two folds, crash lock bottom box packaging.the machine also produces on E,C,B,A,AB,EB five facer corrugate board, or Die-cutting and flex-printing slotted corrugated board material, straight line, two folds, crash lock bottom cartons. The whole machine has various set up, it is simple,convenient for operation. The machine is equipped with paper feeding correction locator, continuous box organizing stacker , IHM and PLC system, (option: online diagnose system). With remoter, the transmission structure is with independent motor driver, create smooth and quiet operation. The conveyer's upper belt is with independent pressure pneumatic control. Equipped with motorized platen, high-power servo motors for crash lock function, high stability and efficiency, and fulfill convenient operation requirement. This machine is produced according to European CE standards.

»» Specifications

Performance/models	EF-1500/1700/2100/2800/3200
Max.sheet size(mm)	1450/1700/2100/2800/3200*1300
Applicable paper	Cardboard 300g-800g corrugated paper F、E、C、B、A、EB、AB
Max.belt speed	240m/min

EF-1500/1700/2100/2800/3200

Corrugated board Series Folder Gluer

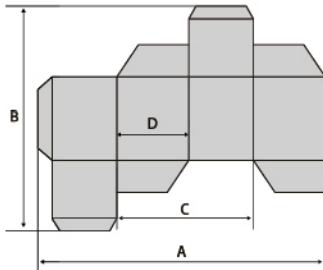


»»» Characteristic:

- Modulation structure design, can upgrade machine function according to customer's requirement.
- The whole machine drive way adopts independent synchronized motor drive.
- Special equipped with paper regulator device .
- Strengthen the broadening upper and lower belt drive, suitable for corrugated cartons. The whole machine guide board adjust is electric mobile system, easy commissioning .
- Upper and lower board movement adopts straight line rail system, to ensure the mechanical accuracy of movement .
- Humanized design attachment installation, easy operation.
- A hexagon spanner can adjust the whole set of machine easy operation.
- Pressing unit has regulator, and collecting unit has patting device, can effectively avoid the "scissors mouth" phenomenon of corrugated products.
- Collecting paper unit adopts cylinder type pressing system, easy for adjust pressure, and make the products can pasted effectively.
- Touch screen control panel.
- Remote control convenience for operators to remote control the start and stop of machine .

EF-1500/1700/2100/2800/3200

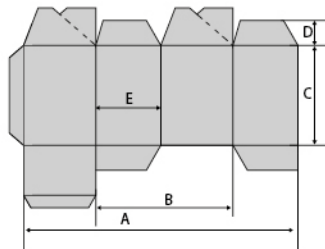
Corrugated board Series Folder Gluer



Straight-line boxes (Standard folding section)

Unit: mm (inch)

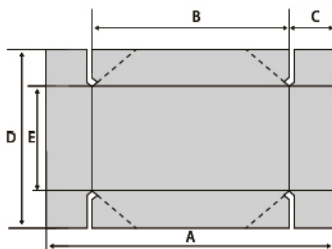
	1500	1700	2100	2800	3200
A	420-1450 (16.54-57.09")	420-1700 (16.54-66.93")	520-2100 (16.54-82.7")	520-2800 (16.54-110.24")	520-3200 (20.47-125.98")
B	150-1300 (5.91-51.18")	150-1300 (5.91-51.18")	150-1300 (5.91-51.18")	150-1300 (5.91-51.18")	150-1300 (5.91-51.18")
C	Min 205 (8.07")	Min 205 (8.07")	Min 275 (10.83")	Min 275 (10.83")	Min 275 (10.83")
D	Min 50 (1.97")	Min 50 (1.97")	Min 50 (1.97")	Min 50 (1.97")	Min 50 (1.97")



Crash-lock bottom boxes

Unit: mm (inch)

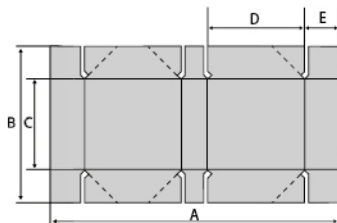
	1500	1700	2100	2800	3200
A	420-1450 (16.54-57.09")	420-1700 (16.54-66.93")	520-2100 (20.47-82.7")	520-2800 (20.47-110.24")	520-3200 (20.47-125.98")
B	Min 205 (8.07")	Min 205 (8.07")	Min 275 (10.83")	Min 275 (10.83")	Min 275 (10.83")
C	100-840 (3.94-33.07")	100-840 (3.94-33.07")	100-840 (3.94-33.07")	100-840 (3.94-33.07")	100-840 (3.94-33.07")
D	35-300 (1.38-11.81")	35-300 (1.38-11.81")	35-300 (1.38-11.81")	35-300 (1.38-11.81")	35-300 (1.38-11.81")
E	Min 50 (1.97")	Min 50 (1.97")	Min 50 (1.97")	Min 50 (1.97")	Min 50 (1.97")



4 corner boxes without lid

Unit: mm (inch)

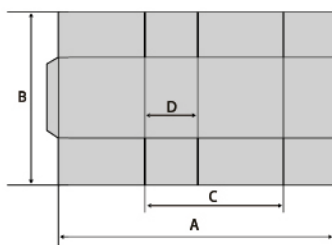
	1500	1700	2100	2800	3200
A	260-1200 (10.24-47.24")	260-1480 (10.24-58.27")	290-1580 (11.42-62.2")	290-1880 (11.42-74.02")	290-1880 (11.42-74.02")
B	200-1140 (7.87-44.88")	200-1420 (7.87-55.91")	250-1600 (9.84-62.99")	250-1800 (9.84-70.86")	250-1800 (9.84-70.86")
C	30-200 (1.18-7.87")	30-200 (1.18-7.87")	40-250 (1.57-9.84")	40-250 (1.57-9.84")	40-250 (1.57-9.84")
D	Max 1000 (39.37")	Max 1000 (39.37")	Max 1100 (43.31")	Max 1100 (43.31")	Max 1100 (43.31")
E	Min 100 (3.94")	Min 100 (3.94")	Min 150 (5.91")	Min 150 (5.91")	Min 150 (5.91")



6 corner boxes

Unit: mm (inch)

	1500	1700	2100	2800	3200
A	Max 1200 (47.24")	Max 1400 (55.12")	Max 1750 (68.9")	Max 2100 (82.68")	MAX 1850 (72.83")
B	Max 800 (31.50")	Max 1000 (39.37")	Max 1000 (39.37")	Max 1000 (39.37")	Max 1000 (39.37")
C	Min 100 (3.94")	Min 100 (3.94")	Min 150 (5.91")	Min 150 (5.91")	Min 150 (5.91")
D	Max 500 (19.69")	Max 600 (23.62")	Max 700 (27.56")	Max 800 (31.50")	Max 900 (35.43")
E	35-200 (1.38-7.87")	35-200 (1.38-7.87")	50-200 (1.97-7.87")	50-200 (1.97-7.87")	50-200 (1.97-7.87")

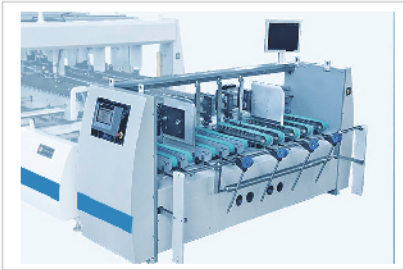


Regular Slotted Container (RSC)

Unit: mm (inch)

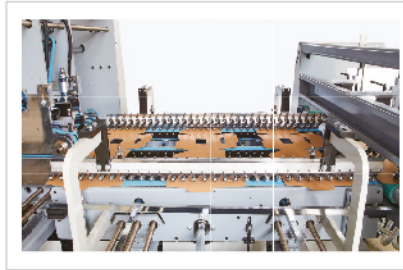
	1500	1700	2100	2800	3200
A	420-1450 (16.54-57.09")	420-1700 (16.54-66.93")	520-2100 (20.47-82.7")	520-2800 (20.47-110.23")	520-3200 (20.47-125.98")
B	180-1300 (7.09-51.18")	180-1300 (7.09-51.18")	180-1300 (7.09-51.18")	180-1300 (7.09-51.18")	180-1300 (7.09-51.18")
C	Min 205 (8.07")	Min 205 (8.07")	Min 275 (10.83")	Min 275 (10.83")	Min 275 (10.83")
D	Min 50 (1.97")	Min 50 (1.97")	Min 50 (1.97")	Min 50 (1.97")	Min 50 (1.97")

EF-650/850/1100 Automatic Folder Gluer



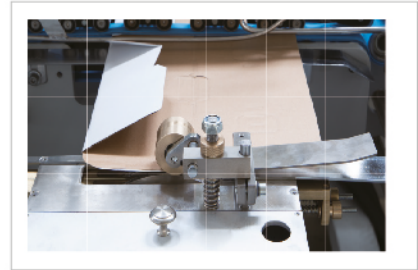
* Feeder Section

- Designated A/C motor with micro-adjustable variable speed controller; - Seven individual adjustable feed belts (four of which are suction belts) ensure easy setup and smooth feeding;
- Motorized knurl rollers guide the belts for smooth and high speed transport



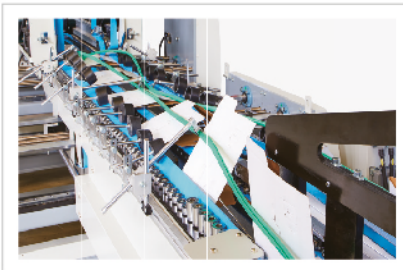
* Side Alignment Section

- The side-alignment section guarantees smooth feeding between the feeder and pre-breaking section.



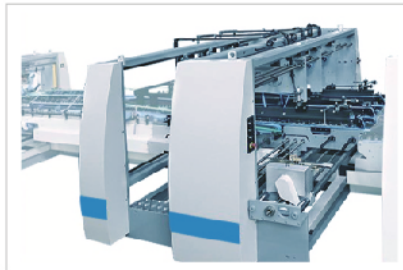
* Gluing system

- Two sets of conventional lower gluing pot (left and right side) at final folding section;
- Optional non-contact electronic gluing system.



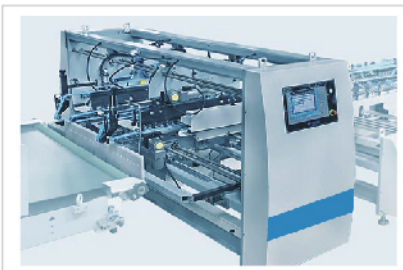
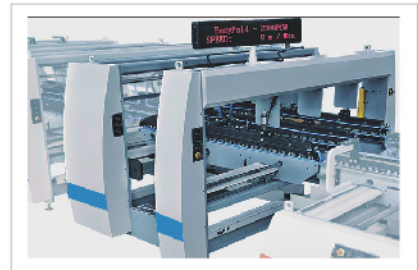
* Final Fold Section

- Special extra long folding module to ensure paper board enough space to stretch before folding into shape; - Left and right outward folding belts are driven by independent motors with variable speed control for straight folding.



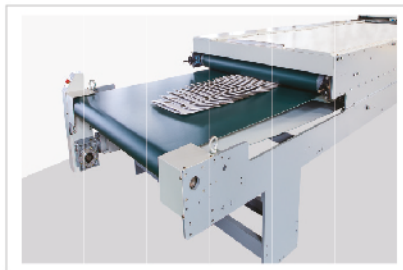
* FIRST & SECOND FOLDING SECTION

- Three carrier construction;
- To suit a wide range of regular and irregular boxes, dedicated 4 corner and 6 corner modules;
- Upper carriers can be pneumatically lifted for different thickness of corrugated board



* Trombone Section

- Upper and lower belts can be moved forward and backward for better adjustments;
- Equipped with trimming correction device;
- Paper jammed detection device is standard equipment.



* Delivery Section

- Blanks are jogged into neat stream before entering Delivery Section;
- A pneumatic pressure adjustment system is deployed to facilitate effective pressure adjustment for better bonding of the product

EAPT-330/450/450W/550

Automatic Square Bottom Paper Bag Making with Twist Handle



EAPT-330/450/450W/550

Automatic Square Bottom Paper Bag Making with Twist Handle

This machine is used paper roll, handle paper roll and paper rope as raw materials to complete the production of square bottom paper bags with handle at once. It is an ideal equipment for the high speed production of paper bags with handle. The steps of making the handle, sticking the handle, forming the paper tube, cutting the paper tube and forming the bag bottom are completed on one machine, realizing full automatic production, which can effectively save labor costs and complete rapid production.

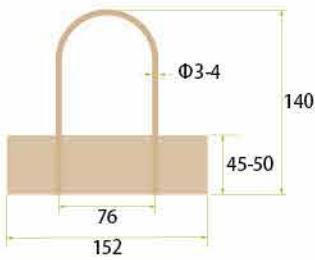
»» Product



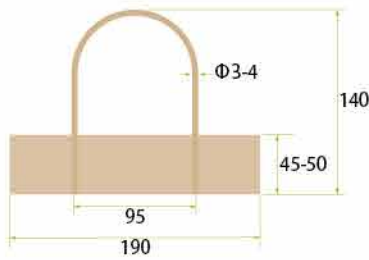
EAPT-330/450/450W/550

Automatic Square Bottom Paper Bag Making with Twist Handle

»» 450W/550



EAPT-330



EAPT-450/450W/550



EAPT-330/450/450W/550

Automatic Square Bottom Paper Bag Making with Twist Handle



» Specifications

Model	EAPT-330	EAPT-450	EAPT-450W	EAPT-550
Cutting length(without handle)	60-530mm	260-530mm	360-800mm	360-800mm
Cutting length(with handle)	260-430mm	260-430mm	360-700mm	360-700mm
Paper bag width(without handle)	130-330mm	150-450mm	220-450mm	220-550mm
Paper bag width(with handle)	220-330mm	250-450mm	250-450mm	250-550mm
Paper bag bottom width	70-180mm	90-180mm	100-250mm	100-250mm
Paper thickness(without handle)	60-160g/m ²	60-160g/m ²	60-160g/m ²	60-160g/m ²
Paper thickness(with handle)	80-160g/m ²	80-160g/m ²	90-160g/m ²	90-160g/m ²
Twisted handle diameter	3-4mm	3-4mm	3-4mm	3-4mm
Handle patch length	152mm	190mm	190mm	190mm
Handle patch width	45mm	50mm	50mm	50mm
Handle patch thickness	100-120g/m ²	100-120g/m ²	100-120g/m ²	100-120g/m ²
Twisted handle height	140-150mm	140-150mm	140-150mm	140-150mm
Paper roller width	430-1050mm	570-1290mm	670-1430mm	670-1630mm
Max. diameter of paper roller	1200mm	1200mm	1200mm	1200mm
Paper roller inner diameter	76mm	76mm	76mm	76mm
Power	25kw	25kw	30kw	30kw
Machine speed	60-150pcs/min	60-150pcs/min	30-120pcs/min	30-100pcs/min
Air supply	>0.12m ³ /min 0.6MPa	>0.12m ³ /min 0.6MPa	>0.12m ³ /min 0.6MPa	>0.12m ³ /min 0.6MPa
Machine weight	18tons	19.5tons	19.5tons	23tons
Machine dimension(LxWxH)	12000x5400x2600mm	12000x5600x2600mm	13500x5700x2600mm	13500x5700x2600mm

EAPF-330/450/450W/550

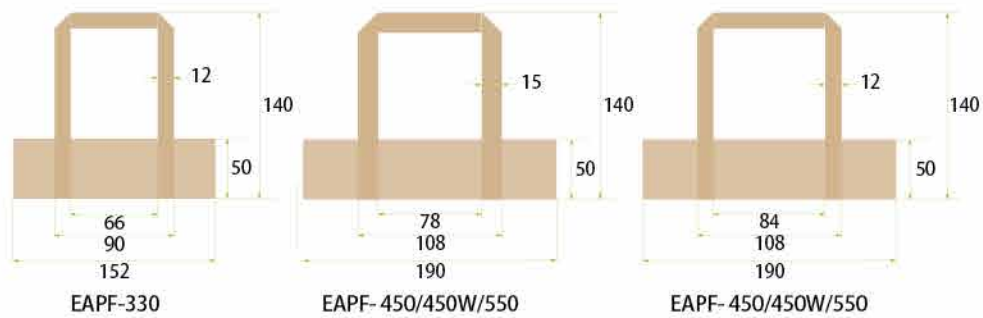
Automatic square bottom paper bag making machine with flat handle

Product



EAPF-330/450/450W/550

Automatic square bottom paper bag making machine with flat handle



EAPF-330/450/450W/550

» Specifications

Model	EAPF-330	EAPF-450
Cutting length(without handle)	260-530mm	260-530mm
Cutting length(with handle)	260-430mm	260-430mm
Paper bag width(without handle)	130-330mm	180-450mm
Paper bag width(with handle)	220-330mm	250-450mm
Paper bag bottom width	70-180mm	90-180mm
Paper thickness(without handle)	60-160g/m ²	60-160g/m ²
Paper thickness(with handle)	80-160g/m ²	80-160g/m ²
Flat handle width	12mm	12mm or 15mm
Flat handle thickness	100-120g/m ²	100-120g/m ²
Handle patch length	152mm	190mm
Handle patch width	45mm	50mm
Handle patch thickness	100-120g/m ²	100-120g/m ²
Flat handle height	140mm	140mm
Paper roller width	430-1050mm	570-1290mm
Max. diameter of paper roller	1200mm	1200mm
Paper roller inner diameter	76mm	76mm
Power	25kw	25kw
Machine speed	60-150pcs/min	60-150pcs/min
Air supply	>0.12m ³ /min 0.6MPa	>0.12m ³ /min 0.6MPa
Machine weight	18tons	19.5tons
Machine dimension	12000x5400x2600mm	12000x5600x2600mm



EAPF-330/450/450W/550

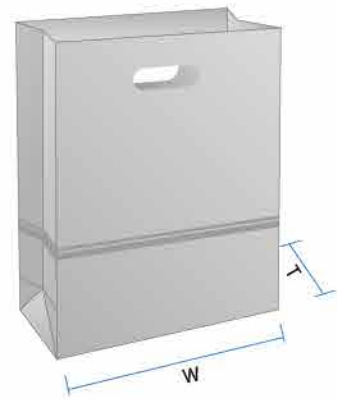
» Specifications

Model	EAPF-450W	EAPF-550
Cutting length(without handle)	360-800mm	360-800mm
Cutting length(with handle)	360-700mm	360-700mm
Paper bag width(without handle)	220-450mm	220-550mm
Paper bag width(with handle)	250-450mm	250-550mm
Paper bag bottom width	100-250mm	100-250mm
Paper thickness(without handle)	60-160g/m ²	60-160g/m ²
Paper thickness(with handle)	90-160g/m ²	90-160g/m ²
Flat handle width	12mm or 15mm	12mm or 15mm
Flat handle thickness	100-120g/mV	100-120g/m ²
Handle patch length	190mm	190mm
Handle patch width	50mm	50mm
Handle patch thickness	100-120g/m ²	100-120g/m ²
Flat handle height	140mm	140mm
Paper roller width	670-1430mm	670-1630mm
Max. diameter of paper roller	1200mm	1200mm
Paper roller inner diameter	76mm	76mm
Power	30kw	30kw
Machine speed	30-120pcs/min	30-100pcs/min
Air supply	>0.12m ³ /min 0.6MPa	>0.12m ³ /min 0.6MPa
Machine weight	19.5tons	23tons
Machine dimension	13500x5700x2600mm	13500x5700x2600mm

EPP Patchi Paper Bag Making Machine

This machine is used paper roll, handle paper roll and paper rope as raw materials to complete the production of square bottom paper bags with handle at once. It is an ideal equipment for the high speed production of paper bags with handle. The steps of making the handle, sticking the handle, forming the paper tube, cutting the paper tube and forming the bag bottom are completed on one machine, realizing full automatic production, which can effectively save labor costs and complete rapid production.

»» Production site



EPP Patchi Paper Bag Making Machine



» Specifications

Model	EPP-330	EPP-450	EPP-450W	EPP-550
Cutting length	260-530mm	260-530mm	360-800mm	360-800mm
Paper bag width	130-330mm	150-450mm	220-450mm	220-550mm
Paper bag bottom width	70-180mm	70-180mm	100-250mm	100-250mm
Paper thickness	60-160g/m ²	60-160g/m ²	80-160g/m ²	80-160g/m ²
Paper roller width	430-1050mm	570-1290mm	670-1430mm	670-1630mm
Max. paper roller diameter	1200mm	1200mm	1200mm	1200mm
Paper roller inner diameter	76mm	76mm	76mm	76mm
Patch width	80-120g/m ²	80-120g/m ²	80-120g/m ²	80-120g/m ²
Patch thickness	180mm	180mm	180mm	180mm
Max. diameter of patch	700mm	700mm	700mm	700mm
Power	15.8kw	15.8kw	22.8kw	22.8kw
Machine speed	60-200pcs/min	60-180pcs/min	30-120pcs/min	30-100pcs/min
Air supply	>0.12m ³ /min 0.6MPa	>0.12m ³ /min 0.6MPa	>0.12m ³ /min 0.6MPa	>0.12m ³ /min 0.6MPa
Machine weight	8.5tons	10tons	12tons	14tons
Machine dimension(LxWxH)	11700x2100x2000mm	11700x2450x2000mm	13500x3400x2000mm	13500x3400x2000mm



EP-330/450/450W/550

This machine is used for making paper bags automatically from unbleached paper or printed paper roll, such as Kraft paper, food grade paper, etc. It is completed by auto center gluing, printing tracking, material folding, fixed length cutting, bottom indentation, bottom folding, bottom gluing, bag bottom forming and bag collecting at one time.

This machine adopts motion controller, servo motor programming, operating easily, efficient production, stable running. It can produce various specifications and sizes of square bottom paper bags, bread bags, leisure food bags, shopping bags and other environmental paper bag special paper bag machine.

»» EP-330/450



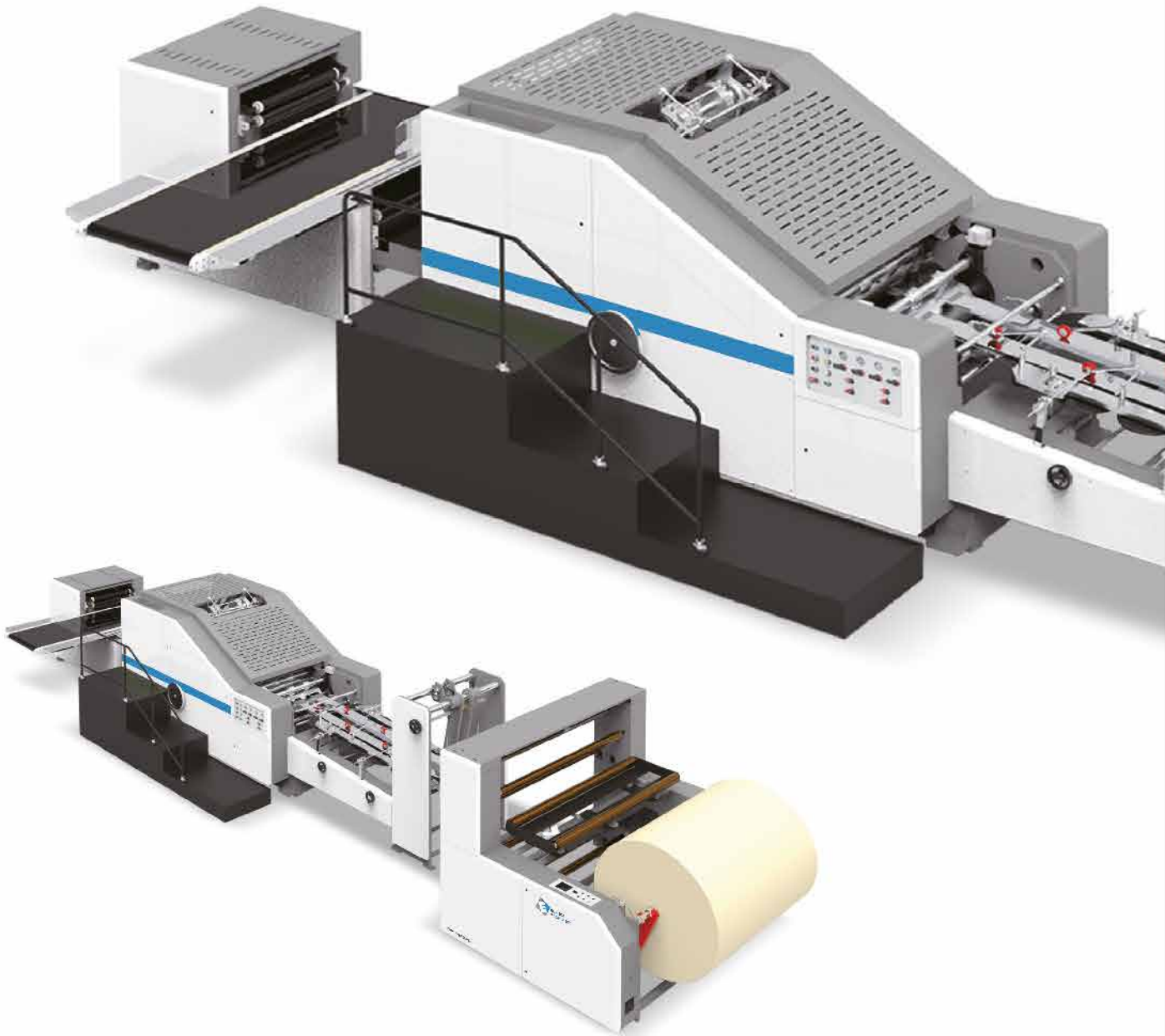
»» Production site



Standard Paper Bag



»» EP- -450W/550



»» Production site



EP-330/450/450W/550

Square Bottom Paper Bag Machine(Double Roll Paper)

»» Product features

This machine is based on the original square bottom paper bag machine, double roll paper feeding station was added. Firstly stick two layers of paper, then making paper tube, cutting the tube or color mark tracking, pressing bag bottom line, gluing bag bottom, bag forming and pressing the finished paper bag.

»» EP-330/450



EP-330/450/450W/550

Square Bottom Paper Bag Machine(Double Roll Paper)



EP-330/450/450W/550

Square Bottom Paper Bag Machine

»» Product



Square Bottom Paper Bag Machine

»» Product features

The two processes of printing and bag making are connected together, which reduces the intermediate process of printing the paper roll and rewinding, and then making bags, reducing labor costs and user investment costs. Generally, it can connect with one-color, two-color, three-color and four-color printing machine, and adopts environmentally friendly flexo printing water ink.



- 1-4 colors inline printing(optional)

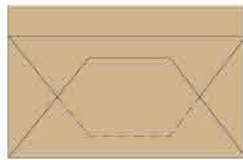
EP-330/450/450W/550



Bottom Of Paper Bag



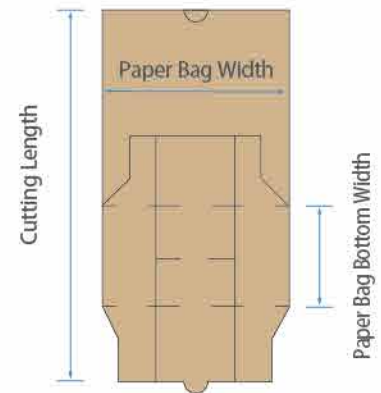
Standard I



Standard II



Custom hexagonal bottom



» Specifications

Model	EP-330	EP-450	EP-450W	EP-550
Cutting length	260-530mm	260-530mm	360-800mm	360-800mm
Paper bag width	130-330mm	150-450mm	220-450mm	220-550mm
Paper bag bottom width	70-180mm	70-180mm	100-250mm	100-250mm
Paper thickness	60-160g/m ²	60-160g/m ²	80-160g/m ²	80-160g/m ²
Paper roller width	430-1050mm	570-1290mm	670-1430mm	670-1630mm
Max. paper roller diameter	1200mm	1200mm	1200mm	1200mm
Paper roller inner diameter	76mm	76mm	76mm	76mm
Power	8kw	8kw	15kw	15kw
Machine speed	60-200pcs/min	60-180pcs/min	30-120pcs/min	30-100pcs/min
Air supply	>0.12m ³ /min 0.6MPa	>0.12m ³ /min 0.6MPa	>0.12m ³ /min 0.6MPa	>0.12m ³ /min 0.6MPa
Machine weight	8.5tons	10tons	12tons	14tons
Machine dimension(LxWxH)	9200x2100x2000mm	9200x2450x2000mm	11000x3400x2000mm 13500x3400x2000mm	11000x3400x2000mm 13500x3400x2000mm

01

Configuration:



- Touch screen for operation function, easy to operate and learn.

02



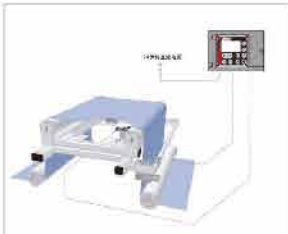
- Adopts Yaskawa brand from Japan servo motor system, Through the high-speed bus control mode, ensure the machine high-speed and stable.



- Adopt American Eaton low voltage apparatus and button switch



- The paper roller loading and unloading is adopts by hydraulic automatic lifting structure and unwinding is adopts by full-automatic tension control system from W+L Germany to achieve close-looptension control with load cell. *option



- We are using BST web guiding system to ensure web rectification and keep at correct position. *option



- Handle making and gluing



- Handle feeding and pasting

» Configuration:

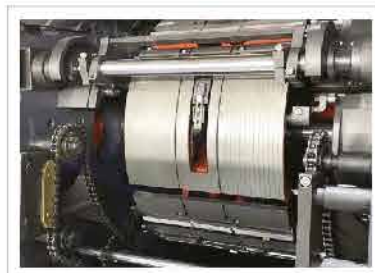


• Tube forming and cutting

• Bottom Creasing and Glue Pasting



• KQ glue gun system with pressure compensation to ensure glue value constantly whatever running speed is.



• Paper bag delivery by two methods

Flexo Printing Machine Inline(2 colors / 4 colors)



2-color Printing



4-color Printing

» Specifications

Max. Printing material width	1200mm	1400mm
Max. Printing width	1160mm	1360mm
Printing length range	230-800mm	230-1000mm
Printing speed	5-100m/min	5-100m/min
Register precision	±0.20mm	±0.20mm
Thickness of plate (including the thickness of double sides glue)	2.28mm+0.38mm (can be customized)	2.28mm+0.38mm (can be customized)
Weight	3000kg	3500kg

- Pneumatic lifting and lowering printing plate cylinders, when machine starts, auto lift plate and printing. When machine stop, auto lifting the printing plate and ink delivery.
- Inking with ceramic anilox chambered doctor blade, ink pump auto circulation
- 360°circulation longitudinal register, register precision is ±0.1mm
- ±20mm transverse register
- Adjust inking press and printing pressure press by manual
- Adopts external heating pipe, heating temperature can adjust and with evenly blowing by fan

EJ-250/350 Paper Bag Machine



EJ-350

1 Feeding Part

- Hydraulic lifting, huge thrust, Can hover at will.

2 Perforating Part

- Thread adjustment, More delicate adjustment.
- Multiple protection, safer.

3 Inserting Part

- Adjustable up, down, Left and ust.
- The machine can be operated On one side to facilitate Personnel operation and Improve efficiency.

4 Bottom Folding Part

- The system digitally Adjusts the folding length Of the paper bag, which is More intelligent and conven

5 Collecting Part

- Fixed quantity Counting function



EJ-250/350 Paper Bag Machine

EJ-250

This machine is suitable for many kinds of environmental protection roll paper such as kraft paper, butter paper, food grade film coated paper, medical paper, etc. It is piercing, paper edge gluing, color standard length fixing (or fixed length), raw material forming, length fixing breaking, bottom folding, bottom gluing, forming and other processes in one line.

This machine adopts motion controller and servo motor programming, which is easy to operate, efficient in production and stable in operation. It is for producing environmental protection paper bags of various specifications and sizes, such as sharp bottomed paper bags, bread bags with windows, leisure food bags, dry fruit bags, etc.



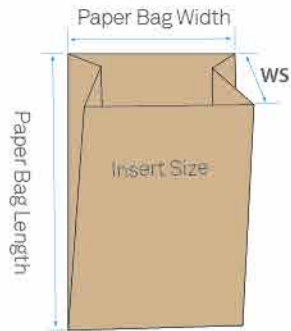
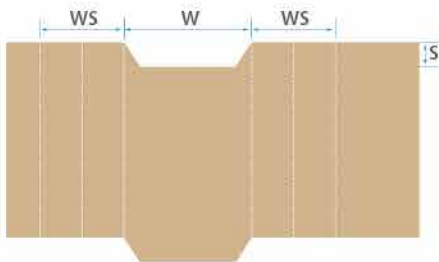
Flat Bottom Paper Bag Machine Inlin Printing



*1-4 colors inline printing(optional)

Net production is subject to sizes, materials etc.(Different paper bag length, different machine speed)

Expansion Diagram



EAPF-330/450/450W/550



» Specifications

Model	EJ-250	EJ-350
Bag Making Speed	50-700pcs/min	50-600pcs/min
Maximum Linear Speed	120m/min	110m/min
Paper Bag Length (L)	155-715mm	110-450mm
Paper Bag Width (W)	70-350mm	70-250mm
Insert Size (WS)	20-120mm	20-120mm
Step Height (S)	15/20mm	15/20mm
Paper Thickness	35-80g/m ²	35-80g/m ²
Paper Roll Width	100-960mm	100-760mm
Paper Roll Diameter	200-1000mm	200-1000mm
Inner Diameter Of Paper	76mm	76mm
Film Width	50-240mm	50-240mm
Film Thickness	0.012-0.037mm	0.012-0.037mm
Film Material	OPP/PET	OPP/PET
Film Diameter	500mm	500mm
Inner Diameter of Film	76mm	76mm
Total Power	20KW	10KW
Working Air Source	>0.12m ³ /min 0.6MPa	>0.12m ³ /min 0.6MPa
Total Weight	6500kg	4500kg
Machine Size	L7500xW2300xH1800mm	L6800xW1600xH1600mm

Flat Bottom Paper Bag Machine Inlin Printing

Functional introduction



- Touch screen for operation function, easy to operate and learn.
- Hot glue system Swiss RobatechBrand. (option)
- Japan Yaskawa motion controller and servo motor
- Adopts American Eaton electric.



1 Paper Roll Feeding



2 Deviation Correction



3 Film Unwinding



4 Paper Roller Tooth Cutting



5 Paper Bag Forming



6 Paper Bag Sealing

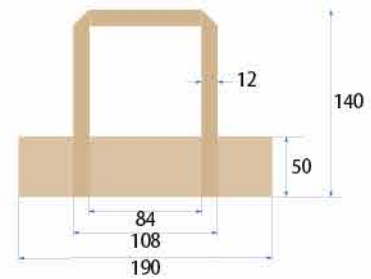
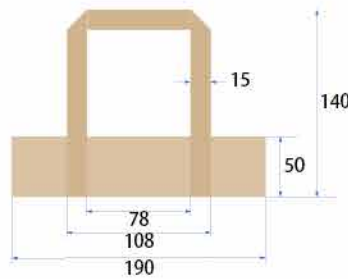
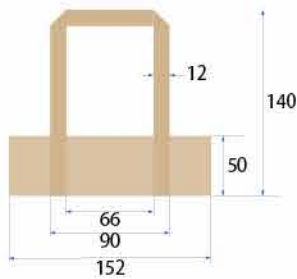


7 Paper Bag Full Apart



8 Paper Bag Collection

»» EFH-19/A



»» Specifications

Model	EFH-19	EFH-19A
Paper sheet weight	80-140g/m ²	80-140g/m ²
Paper bag width	250-450mm	
Paper bag height	250-450mm	
Machine speed	30-35bags/min	150-180pcs/min
Power	12.2kw/380V/50HZ	10kw/380V/50HZ
Dimension	L7000*W2450*H1700mm	L5000*W1500*H1500mm

Net production is subject to sizes, materials etc.

Auxiliary Equipment

»» Product features

Round rope automatic hand-pull machine is mainly used for semi-automatic square bottom paper bag machine. It takes two rolls of narrow web paper and a roll of paper rope as raw materials. Through pasting the web paper and paper rope together, a hand-pull production is completed once after cutting, and then the hand-pull manipulator is pasted on the paper bag to complete the production of hand-held paper bag.

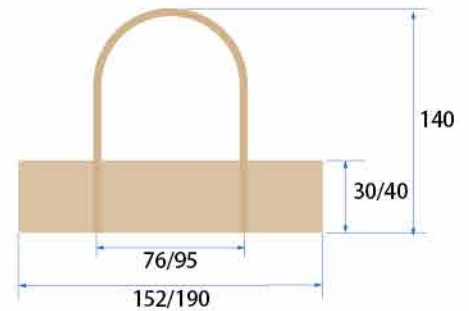
»» ETH-19/A



* Optional conveyor belt

Auxiliary Equipment

»»» Production site



Net production is subject to sizes, materials etc.

»»» Technical parameters

Model	ETH-19	ETH-19A
Paper Roll Core Diameter	Φ 76mm(3")	Φ 76mm(3")
Max. Paper Roll Diameter	Φ 1000mm	Φ 1000mm
Paper Roll Diameter	Φ 2.5~5mm	Φ 2.5~5mm
Paper bag width	250-400mm	
Paper bag height	250-450mm	
Production speed	30-35pcs/min	150-180pcs/min
Total power	10KW/380V 3phase 50Hz	7.8kw/380V/50HZ
Overall dimension	L6000×W2350×H1700mm	L4000×W1300×H1500mm

Auxiliary Equipment

»»» Product features

This machine is mainly equipped with round rope automatic stick hand pull machine and square bottom paper bag machine, using narrow paper roll as raw material, through the high-speed rotation of the machine shaft, the paper roll is twisted into round rope and rewound. Users can adjust the diameter of paper rope to meet the production of different specifications of paper rope.

EKH-1



EKH-2



»»» Technical parar

Model	EKH-2	EKH-1
Paper Roll Inner Diameter	Φ76 mm(3")	Φ76 mm(3")
Max. Paper Roll Diameter	800mm	800mm
Paper Roll Width	20-100mm	20-100mm
Paper Thickness	20-60g/m ²	20-60g/m ²
Paper Rope Diameter	Φ2.5-6mm	Φ2.5-6mm
Max. Rope Roll Diameter	300mm	300mm
Max. Paper Rope width	300mm	300mm
Production Speed	30-35m/min	20-25m/min
Total Power	1.5KW/220V 1 phase	1.1 KW/220V 1 phase
Total Weight	650kg	300kg
Machine Dimension	L 2700xW1300xH950mm	L1580xW1200xH950mm

Net production is subject to sizes, materials etc.

»»» Product features

This machine is mainly equipped with round rope automatic stick hand pull machine and square bottom paper bag machine, using narrow paper roll as raw material, through the high-speed rotation of the machine shaft, the paper roll is twisted into round rope and rewind. Users can adjust the diameter of paper rope to meet the production of different specifications of paper rope.

EKH-180



»»» Technical parameters

Model	EKH-180
Paper Rope Inner Diameter	Φ 76 mm(3")
Inner Diameter of Final Rope Roll	180 mm
Final Rope Reel Diameter	400-600mm
Production Speed	80-150m/min
Total Power	2.2KW/380V 3phase
Total Weight	150kg
Machine Dimension	L1050xW800xH1200mm

Net production is subject to sizes, materials etc.

EUFM Flute Laminator

EUFM Automatic high speed flute laminating machine



*Photo with Flip-flop EUSH

EUFM Flute Laminator



»»» Product description

The paper can be laminated with paperboard to increase the strength and thickness of the material or special effects. After the die-cutting, it can be used for packaging boxes, billboards and other purposes.

Short description: Top sheet: 120 -800g/m thin paper, cardboard
Bottom sheet: ≤ 10 mm ABCDEF flute, ≥ 300 gsm cardboard

Servo positioning Max.Speed : 150m/min
Accuracy: ± 1.5 mm

Sizes Available

EUFM series flute laminator come in three sheet sizes.

1450*1450MM 1650*1650MM 1900*1900MM

EUFM Flute Laminator

Parameters:

Model	EUFM1450	EUFM1650	EUFM1900
Max size	1450*1450mm	1650*1650mm	1900*1900mm
Min size	380*400mm	400*450mm	450*450mm
Paper	120-800g	120-800g	120-800g
Bottom paper	≤10mm ABCDEF corrugated board ≥300gsm cardboard	≤10mm ABCDEF corrugated board ≥300gsm cardboard	≤10mm ABCDEF corrugated board ≥300gsm cardboard
Max laminating speed	150m/min	150m/min	150m/min
Power	25kw	27kw	30KW
Stick accuracy	±1.5mm	±1.5mm	±1.5mm

STANDARD CONFIGURATION:



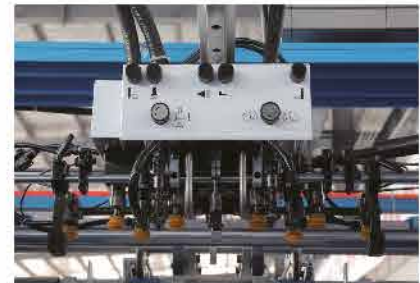
* BOTTOM SHEET FEEDING

- Use imported Servo motor electric controlling system, with Japan NITTA suction belt to make suction power inverter, and belt cleaned by water roller; Patented technology to ensure corrugate and cardboard goes out smoothly and simple operation.



* TOP SHEET FEEDING MECHANISM

- Both paper lifting and feeding nozzle of high speed auto dedicated feeder can be freely adjusted to be adapted to both thin and thick paper. Together with Becker pump, ensure top feeding paper run fast and smoothly.



* ELECTRICAL SYSTEM

- Designed and adopt U.S.A Parker motion controller together with Yaskawa Servo system and inverter, Siemens PLC to ensure machine run at max. speed and accuracy as premium performance and running stability.



EUFM Flute Laminator



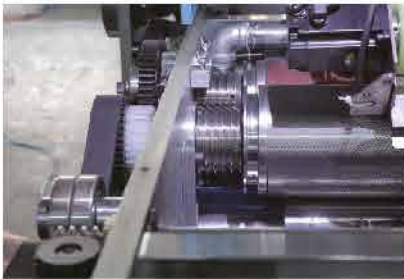
* PRE-STACK PART

- Pre-pile system with preset function can be set as paper size through touch screen and oriented automatically to reduce set-up time efficiently.



* POSITIONING SYSTEM

- Photocell together with Parker Dynamic module and Yaskawa Servo system ensure the accuracy of orientation of top and bottom paper. Stainless steel glue roller with fine anilox grinding to guarantee even glue coating even at min. glue quantity.



* Transmission System

- Gates synchronical belt together with SKF bearing as main transmission is adopted to ensure stability. Both pressure rollers, dampening roller and glue value can be easily adjusted by handle with mechanical encoder.



* TOUCH SCREEN AND AUTOMATIC ORIENTATION

- Paper format can be set through 15inch Touch Monitor and oriented through inverter motor automatically to minimize set-up time. The Auto orientation is applied to pre-pile unit, top feeding unit, bottom feeding unit and positioning unit. Eaton M22 series button ensure long duty time and machine beauty.



* CONVEYOR

- Lifted conveyer unit facilitate operator to unload paper. Long conveyer unit together with pressure belt to make laminated job dry rapidly.



* AUTOMATIC LUBRICATION SYSTEM

- Automatic lubrication pump for all main bearing ensure machine strong endurance even under heavy duty working condition.

EUFM Flute Laminator

»» OPTIONS:



* LEADING EDGE FEEDING SYSTEM

- Lead edge ensure thick corrugated board like 5 or 7 layers run smoothly even under very curing condition.



* SHAFTLESS SERVO FEEDER

- Shaftless servo feeder is utilized for extra long sheet at flexible motion.



* EXTRA SAFETY GUARD AND SAFETY RELAY

- Extra closed cover around the machine for additional safety assistance. Safety relay to ensure door switch and E-stop function redundantly.

Automatic flip flop stacker for flute laminator

EUSH 1450/1650



EUSH Flip Flop can work with EUFM Series High speed flute laminator or any other brand flute laminator.

Max. paper size: 1450*1450mm /1650*1650mm

Min. paper size : 450*550mm

Speed: 5000-10000pcs/h

»» Description:

EUSH series flip-flop stacker is an auxiliary product of the flute laminating machine which is composed of speed-up table, counter and stacker, turning table and delivery table. Wherein, laminated board accelerate in speed-up table and collect in stacker according to certain height. Turning table will finish the turning of board and send into delivery unit. It has the advantages of flattening and affixing paper to significantly improve the efficiency of board delivery and reduce the amount of operator.

EUSH Series flip-flop equip preset function which can orient side apron and layer according to board size which you set in touch screen automatically

Automatic flip flop stacker for flute laminator

»» Standard Configuration:



* Speed-up Unit



* Count and Stacker



* Turning Device driven by servo motor



* Non-stop Delivery



* Touch Screen which can set board size and finish orientation automatically.

»» OPTION:



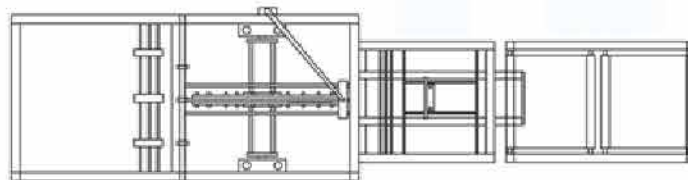
* Automatic Exit



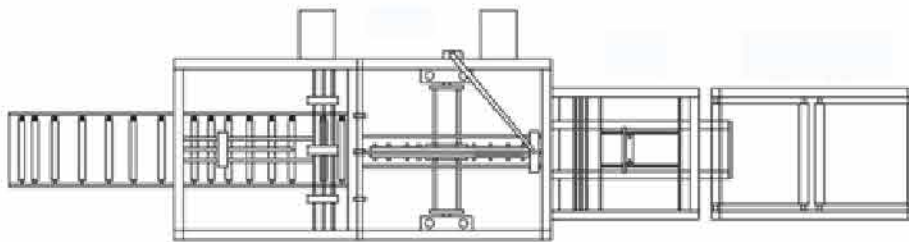
* Semi-Auto Tray loader

Automatic flip flop stacker for flute laminator

Operating principle:



**Paper comes out from the back
Without Roller**



**Paper comes out from the back
With Roller**

»» Specification:

Model	EUSH 1450	EUSH 1650
Max. paper size	1450*1450mm	1650*1650mm
Min. paper size	450*550mm	450*550mm
Speed	5000-10000pcs/h	5000-10000pcs/h
Power	8kw	11kw

S-28E Three Knife Trimmer



»» Description:

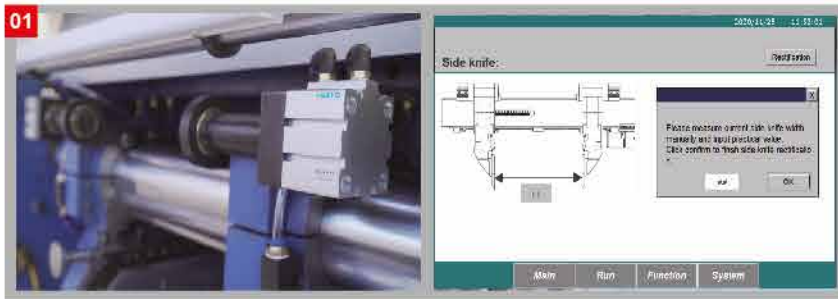
S-28E three knife trimmer is the latest design machine for book cut. It adopts the latest optimum design including programable side knife, servo control gripper and quick-change working table to match the request regarding short run and quick set-up of both digital printing house and conventional printing factory. It can rise efficiency of short-run job highly.

»» Specifications

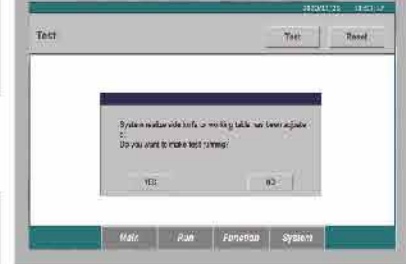
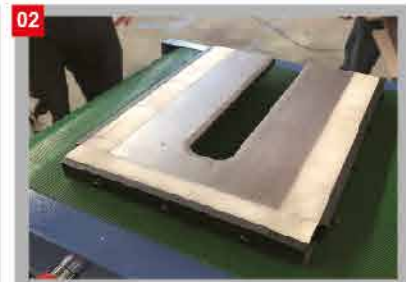
Model	S28E
Max. Trim Size(mm)	300x420
Min. Trim Size(mm)	80x80
Max. Trim Height(mm)	100
Min. Stock Height(mm)	8
Max. cutting speed (times/min)	28
Main Power(kW)	6.2
Overall Dimension (L×W×H)(mm)	2800x2350x1700

S-28E Three Knife Trimmer

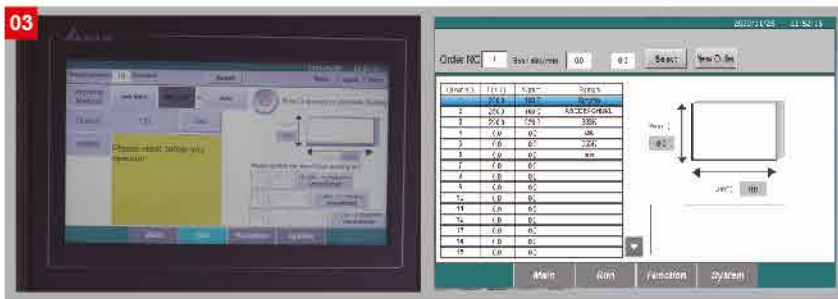
Characteristic:



- Programmable side knife and pneumatic locking



- 7 pcs of working table can cover full range of cutting size and quick-change design to fulfil rapid set up each new order. Machine computer can automatically realize the size of working table to avoid accident due to wrong size reorganization.



- 10.4 high resolution monitor with touch screen for machine operation, order memorization and various error diagnosis.



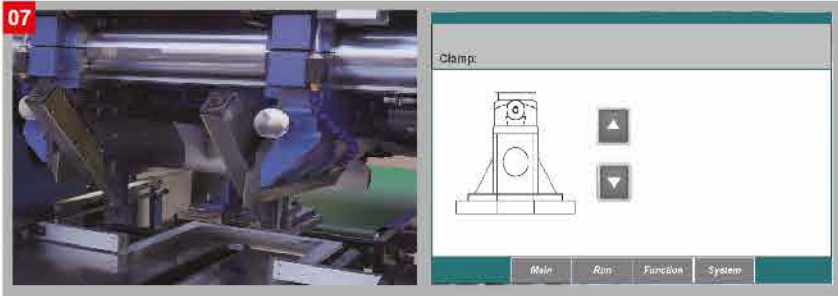
- Gripper is driven by servo motor and pneumatic clamp. The book width can be set through touch screen. High precision linear guide ensure precise orientation and long working life. Photocell sensor is equipped to achieve book auto-feeding by induction.



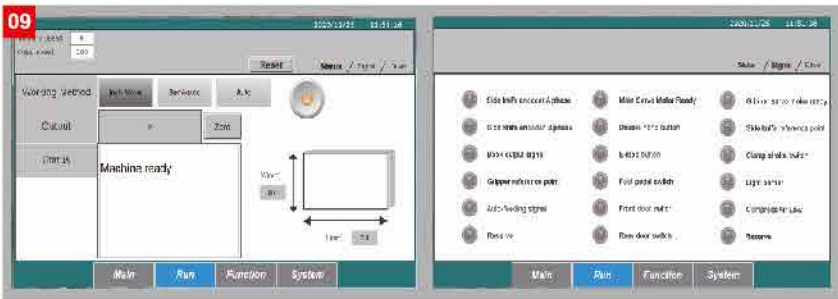
- Main motor is driven by 4.5 KW servo motor instead of conventional AC motor with elec-magnet clutch, free of maintenance, powerful trimming, long working life and ensure accurate working sequence among different machine units. All units movement of machine can be detected and set through encoder angle which facilitate trouble shooting

- Auxiliary side knife ensure to avoid any book edge defect.

S-28E Three Knife Trimmer



- Motorized clamp height adjustment which can be operated through touch screen to match different cutting height.



- Combined with sensor equipped at all over the machine, all kinds of working mode, including inch-move, semi-auto mode, Auto mode, Test mode to facilitate operation and minimize operation fault possibility.

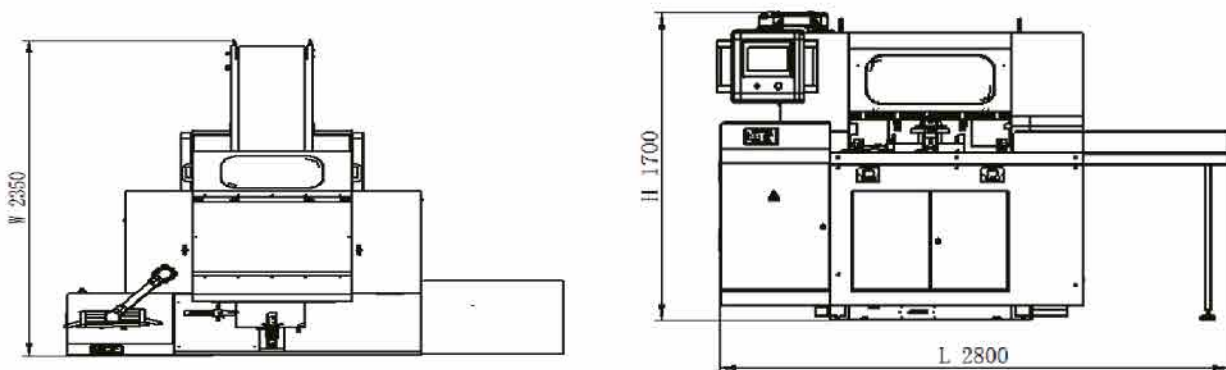


- Light barrier, door switch and extra photo cell combined with PILZ safety module achieve CE safety standard with redundant circuit design. (*Option)



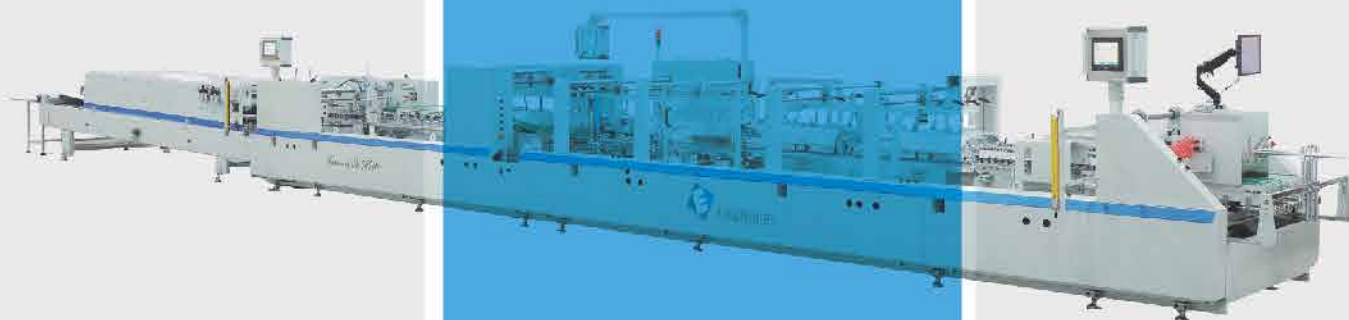
- Servo driven manipulator achieve high efficiency book output even in auto continuous mode at high speed.

Machine Layout:



SALES NETWORK





SOUTH-EAST EUROPE REPRESENTATIVE:
PREPRESS PRINT DOO

+381 64 1340740
ctp@cron.rs
www.cron.rs
SERBIA - BELGRADE

+385 99 4477468
ctp@cron.com.hr
www.cron.com.hr
CROATIA - ZAGREB