



科 祺 自 动 化

- ／ 喷胶系统
Gluing system
- ／ 质量保障系统
Quality Insurance System
- ／ 等离子表面处理系统
Plasma Surface Treatment System
- ／ 自动贴胶设备
Auto tape application machine

东莞科祺自动化设备有限公司
Dongguan Keqi Automation Equipment Co., Ltd.

在智能喷贴胶领域让世界相信中国制造，相信科祺智造

Intelligent dispensing / pasting adhesives of industry, Trust made in china, Trust made in KQ.

公司使命 Mission

在智能喷贴胶领域让世界相信中国制造，相信科祺智造。

公司愿景 Vision

做世界一流的智能喷贴胶整体解决方案供应商。

公司价值观 Values

创新务实，精益求精，客户至上，成就你我。



公司简介

ABOUT US

东莞科祺自动化有限公司成立于2008年，主要为印刷包装后道工序，提供自动冷/热喷胶机，等离子表面处理机，自动贴双面胶设备等自动喷、贴胶解决方案。主要为彩盒，瓦楞纸箱解决粘盒，密封等工艺，可直接安装在糊盒机，制盒机，制袋机，折页机，组装机等机械。

公司拥有一百多人专业的研发及制造团队，深耕纸制品包装行业十余载，不仅从国外引进先进制造数控加工中心，且形成自己的生产检测标准，成立实验室从原材料到成品检测，制程中要求100%全检，8小时全方位老化测试。销售服务网点覆盖全国，实现本地化快速服务。

科祺智造，让包装粘贴胶更简单。

KQ Auto, Since 2008, Leading suppliers of cold glue/hot melt dispensing application and plasma treatment surface ,double sided tape application etc equipment, KQ specialize in the manufacturing packing and sealing of items such as corrugated boxes, cartons, books, bags, and pharmaceutical products across the corrugated ,packaging, Envelope, Folding, Carton, Print finishing,commercial packages Nonwovens, furniture ,product assembly, bag manufacturing industries.KQ facilities applicated all over the world.

KQ team, Over one hundred employees,professional of industry experienced, advance R&D technology, variety of processing inspections.

Make sure KQ products, being the most of satisfactions to clients.

为什么选择科祺? WHY CHOOSE US



精密制造能力

Precision manufacturing ability

国外引进四千多万元精密加工中心，设有自己软件开发中心，软硬件完成自主研发，制造。

Imported to advance of precision facilities, building software R&D center, completely develop software and hardware manufacturing.



产品品质保障

Insurance of quality

工厂配备有两个实验室及多个工艺检测环节，制程中100%全检，8小时全方位老化测试。

Equipped with in testing processed of two experiment rooms,100% full inspection for components, 8 hours aging test of full ranges.



精益求精 不断创新

Keep improving, innovating

不断对硬件进行升级，加强软件研发不断更新换代，同时满足个性化需求。
Upgrade of hardware& software constantly, customized support.



供应链管理完善

Supply chain management

ERP制程管理，提前计划，保证交货时效及零件充足供应。
ERP processing management ,advance planning, ensure supply stable.



本地化服务

Localization service

全国网点布局，多元化配置，实现当地化无缝对接。深耕纸制品包装行业十余载，每年为四千多个客户服务。

Network of service comprehensively, variety of configurations, local service seamlessly. Involved in the package industry over ten years deeply, serving for more than 4000 clients per year.



发展历程

COMPANY HISTORY



2008

科祺成立推出等离子

Established KQ,
promoted plasma
surface machine into
market.



2010

推出冷胶喷胶机年出
货量达300多台

Expanded cold
gluing system,
dispatched over 300
sets once year.



2014

推出贴双面胶机
热熔胶机
冷胶喷胶机
等离子表面处理机
年出货量达2000多台

Expanded to tape
application machine,
cold glue/ hot melt
glue system, plasma
surface machine etc.
dispatched over 2000
sets this year.

2020

2019



冷胶喷胶机
热熔胶机
等离子表面处理机
条码检测系统
自动贴双面胶机
总销量突破万台

All series of products
being popular in
market, And over
10000 sets per year



专注喷贴胶自动化研发，
完成对全国各大区设立办事处
每年为4000多个客户服务。

Focused on the develop of
dispensing adhesive and
pasting tape application
automatically. Established of
office in all major regions.
sevised for more than 4000
customers per year.

冷胶喷胶系统

Cold gluing system



四枪系统

尺寸/ Size: 1280×480×600mm



多枪系统

尺寸/ Size: 1932×666×1800mm

· 高速精准喷胶 Speedy & precision gluing

高精密组件配备高频电磁阀，保证高速工作时，无损施胶。

High precision components are equipped with high frequency solenoid valve to ensure nondestructive gluing when working at high speed.

· 灵活掌控 Flexible control

搭载8寸或15寸触摸屏，每个喷枪可喷8段胶样，且支持点线互换。一键切换到不同种类产品的控制界面。

8 "or 15" screen touch screen, each gun can applicated 8 sections of glue samples, and support point and line exchange. One-key switch to different types of product which in to control interface.

· 应用广泛 Expand application

多种类喷枪，应用不同的使用场景及上胶工艺，支持客户定制。

Various types of guns, application of different situations and glue projects, can be customization.


 四/八通道控制器
4/8 channels controller

 多通道控制器
8/16/24/32 channels

型号	Model	HZ4 / HZ8	型号	Model	HZ16 / HZ24 / HZ32
输入电压	Input voltage	220VAC (±20%)50~60HZ	输入电压	Input voltage	220VAC (±20%)50~60HZ
功率	Power	480W	功率	Power	680W
喷胶精度	Glue sample precision	±1mm	喷胶精度	Glue sample precision	±1mm
胶样程序	Glue sample program	500个	胶样程序	Glue sample program	500个
喷枪施胶段数	Gun of glue sample segments	最多8段/ Up to 8 segments	喷枪施胶段数	Gun of glue sample segments	最多8段/ Up to 8 segments
胶点	Glue sample	4种类型/4 types	胶点	Glue sample	4种类型/4 types
喷枪数量	The number of guns	可选配, 最4/8个 / Optional, 4/8	喷枪数量	The number of guns	可选配, 最24个 / Optional, up to 24
电眼数量	The number of electric eye	可选配, 最4/8个 / Optional, 4/8	电眼数量	The number of electric eye	可选配, 最24个 / Optional, up to 24
重量	Weight	5 Kg	重量	Weight	3 Kg



四枪泵



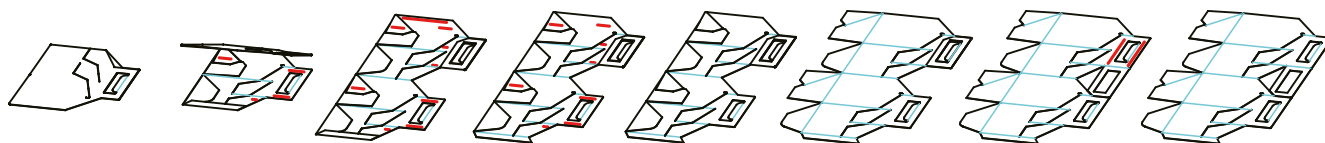
多枪泵

型号	Model	HB6	型号	Model	HB9
胶粘剂最大粘度	Maximum viscosity	3000 mPas	胶粘剂最大粘度	Maximum viscosity	5000 mPas
每双程输送效率	Two-way transport efficiency	80 cm ³	每双程输送效率	Two-way transport efficiency	260 cm ³
压力比	Pressure ratio	6:1	压力比	Pressure ratio	9:1
气源输入要求	Gas source input	6 bar	气源输入要求	Gas source input	6-8 bar
重量	Weight	12.5 Kg	重量	Weight	20 Kg
尺寸	Size	485×225×150	尺寸	Size	554×301×140

· 盒型示意图 Inside box style schematic diagram instructions

冷胶喷胶系统运用在“食品饮料盒”，红色线条为需施胶位置。

Cold gluing system apply in food and beverage boxes, red line is gluing flap position.



冷胶喷胶系统

Cold gluing system

· 热熔胶应用 Application of Hot Melt Adhesive

极快的开关速度，与无磨损控制器相结合，即便是最小点的应用，也能完成。
Splitting switch speed with no abrasion controller, even if the smallest dot can be realized.



· 冷胶应用 Application of Cold Glue

超快速、无磨损电磁应用的非接触式冷胶喷枪，完成精准的冷胶点、线喷涂。
Super fast and no abrasion electro-magnetic non-contact cold glue spray gun, completes precise cold glue dot and line spray gluing.



· 高压活塞泵应用 Application of pump

泵和热熔胶设备与控制器传递信息，并提供正确的供胶。
Pumps and hotmelt devices also exchange messages and commands with the controller.

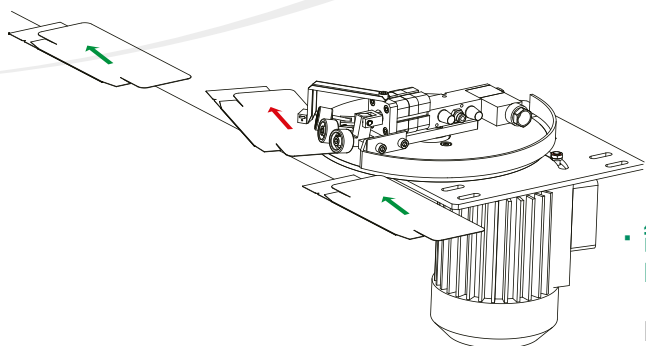
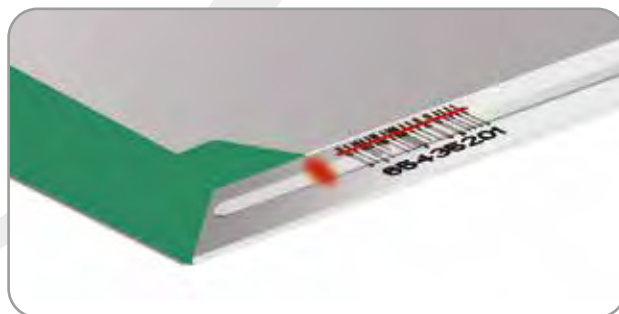
· 读码识别检测 Code Reader Detect

独特一流的传感技术，无论彩色、药监码、EAN或二维码均可识别，并做出比较，从而提供最可靠的质量保证。
Unique and first-class sensor technology, distinguish and compare color code, drug administration code, EAN code and two-dimensional code, so as to provide the most reliable quality.



· 胶水检测应用 Application of Glue Detection

定量式胶水监测模式，用于对胶水上胶位情况的监测。
Actuated glue control and monitor mode, to control and monitor the adhesive positioning.



· 缺陷产品的监测剔除 Detect and kick of defective products

自动跟踪不合格产品，可靠的线性剔除或旋转式剔除方式。
Automatic follow defective products, reliable linear or rotary kicker.

条码检测系统

Bar code detection system



高效的传感技术，无论药监码、EAN、二维码等均可识别，为产品提供提供可靠的质量保证,从而做出判断，并报警停机、剔除。

High efficiency sensor technology, distinguish and compare drug administration code, EAN code,two-dimensional code and so on so as to make a judgment, alarm,shutdown and eliminate.

· 灵活的功能拓展 Flexible functional expansion

具备模块拓展功能、能根据实际生产订单需求，通过添加独立的应用程序，以获得读码、标签、胶水检测、缺陷产品剔除、日期记录等拓展功能，满足个性化需求。

With modular expansion function, by adding independent application procedure,makes you gain expansion functions such as code reader, label, glue detection and kicker of defective products according to actual production orders requirement, so as to meet personalized demand.

· 质量的保障 Quality insurance

卓越的KQ是喷胶控制和检测的模块化系统，所有功能模块的控制和监控功能，均可通过中央触摸屏，实现全面的可视化操作，确保灵活直观，为高效率的加工设备和生产提供最大的可靠性和质量。

Excellent KQ is glue spray and detection modular system, all functional module control and video monitor function can be realized in complete visional operation by central touch screen,ensure flexibility and visualization,providing maximum reliability and quality for high efficiency processing equipment and production.



· 高品质触摸屏 High-quality touch screen

显示屏可显示对比条码、生产速度、产量、不良品数量。显示并记录最后十个错误产品信息，以便追溯。对于错误产品报警或连续错误产品报警并停机。

Distinguish and compare different kinds of bar code, production speed, output, the amount of defective products. Display and record the last ten incorrect product information for traceability. For faulty product alarms, for continuous error product alarms and shutdown.



· 读码识别检测 Barcode reader

可自动识别没有连接的传感器，无需繁琐的设置工作。配备8寸高品质触摸屏，中文显示，操作简便、灵活。

Automatically identify unconnected sensors without cumbersome setup. Equipped with 8-inch high-quality touch screen, chinese display, easy to operate and flexible.



· 应用领域 Application field

MicroPDF码、PDF417码、RSS码、39码、Codabar码、128码、交叉2/5码、93码、UPC/EAN码、药品码。

MicroPDF code, PDF417 code, RSS code, 39 code, Codabar code, 128 code, Cross 2/5 code, 93 code, UPC/EAN code, drug code.

产品型号	Model	KQ-DMI
扫描速率	Working speed	1000次/s Time/s
最小分辨率	Minimum resolution	0.125mm
检测距离	Detection distance	65-500mm
扫描角度	Scanning angle	0-70°
条码形式	Code type	标准Standard
线式条码	Line bar code	所有标签All labels

· 喷胶胶量检测系统

Glue detection system



· 功能介绍 Function introduction

在完成喷胶后检测涂胶量，高精度传感器可以检测涂胶层断胶、位置错误、胶量少等；自动学习取样，精确检测胶水涂层情况，并能提供喷胶不良品的剔除信号，保证产品的品质。减少后段人工全检工序。

KQ cold glue detection work for gluing inspection automatically ,Including adhesive-free, adhesive position faulty, less adhesive etc. Guarantee the quality of the products. Reduce the labor full inspection process in the next program. Easy set up Reliable & high precision monitoring of adhesive -free area. Early detection of emerging defects Display fault amounts on the touch screen

产品型号	Model	PJC-600
检测头分辨率	Detection Resolution	1*1mm
检测头可偏移角度	Detector Inflection Angle	≤20°
检测头焦距	Measuring distance to product	30mm
最大检测速度	Max.Speed	≤300m/min
检测最小胶线宽度或胶点	Monitorable Min.Width of Line& Dot size	1mm
纸张通过时抖动幅度	Dimension of detector	≤5mm
检测头体积	Measuring Dot Position	L20.5mm*W44*H93mm
检测光点位置	Jitter amplitude of product passing	正对着涂胶中心位置 (无纸通过时，焦距下方15cm内无反射遮蔽物)
Jitter amplitude of product passing : Facing location of glued centre(Non- paper passes , Measuring distance within 15cm under non-reflective shelter)		

· 边胶胶量检测系统 Side seam insurance system



· 功能介绍 Function introduction

针对滚轮上胶的过程,出现的溢胶、缺胶、飞胶等问题,推出的边胶胶量检测系统,采用传感器技术及 AI 算法,实时检测胶水胶量、长度等,检测系统可加装在任意糊盒机、糊箱机等在线设备,安装便捷、操作简单,人性化的图形界面。

For processing of tank glue at problems such as overflow, less glue, and over-edge glue. Sided seam detection system is launched, Which applicated sensor & AI technology to scanne the amount and length of glue in real time, and the monitor can be integrated In any online equipment such as folder gluer, conveyor equipment etc., it is easy to install, easy to operate, and has a user-friendly graphical interface.

产品型号	Model	GJC-600
纸张种类	Paper Sheet Request	厚度 Thickness≤2mm, 无金属镀膜 Without metallized film
最大检测胶水厚度	Adhesive Thickness	≤1.5mm
最大检测速度	Jobing Speed	≤600m/min
检测头分辨率	Detection Resolution	1mm
检测头感应区域	Detection Range	L3mm*W4mm
检测头体积	Dimension of detector	L52mm*W50.5*H71mm

冷胶喷胶系统 Cold gluing system

Cold gluing system
冷胶喷胶系统

· 多元化喷枪配置选择 Range of gun



高压电子枪 High pressure electronic gun

型号	Model	PJ-4000
应用	Application	直线上胶Liner gluing
胶条形状	Shape of glue	点/线 Dot/line
最大压力	Maximum pressure	32bar
频率	Frequency	500



多孔喷枪 Multi-holes gun

型号	Model	PJ-4100
应用	Application	直线上胶Liner gluing
胶条形状	Shape of glue	点/线 Dot/line
最大压力	Maximum pressure	32bar
频率	Frequency	500



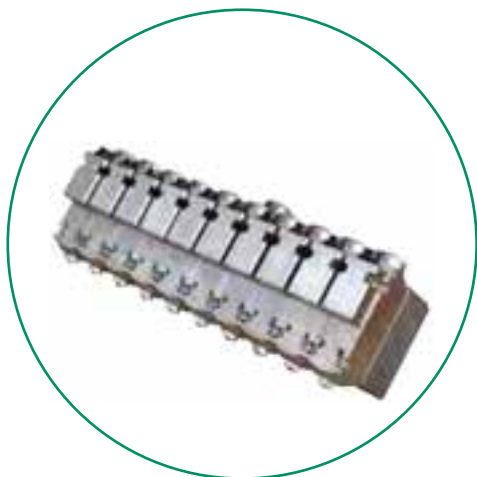
中压枪 Medium pressure gun

型号	Model	PJ-3500
应用	Application	直线上胶Liner gluing
胶条形状	Shape of glue	点/线 Dot/line
最大压力	Maximum pressure	30bar
频率	Frequency	300



喷雾枪 Spraying gun

型号	Model	PJ-4200
应用	Application	直线上胶Liner gluing
胶条形状	Shape of glue	雾状Mist flow
最大压力	Maximum pressure	32bar
频率	Frequency	500



排枪 Multiple gun

型号	Model	PQ20-10
应用	Application	直线上胶Liner gluing
胶条形状	Shape of glue	点/线 Dot/line
最大压力	Maximum pressure	32bar
频率	Frequency	500



气动枪 Pneumatic gun

型号	Model	QD20
应用	Application	直线上胶Liner gluing
胶条形状	Shape of glue	线 Line
最大压力	Maximum pressure	15bar
频率	Frequency	65

联动线喷胶应用方案

Flexo folder gluer spraying application proposal



· 成本控制 Cost control

在任何速度下都可以精确至毫米的精度，将冷胶喷涂在彩盒、纸箱产品所需的施胶位置上，最大限度的减少在生产过程中清洗和安装的时间，减少浪费。

Precision in millimeter at any speed, spraying cold glue adhesive on the gluing flap folding box/carton, decrease the cleaning and installation time during the production process, so to reduce wastage.



· 简便易操作 Simple and convenient to operate

模块化系统设计，冷、热胶的切换，以及其它功能的控制，均可轻松在中央触摸屏幕上一键切换，来变换工作。

Modular system design, shift of cold & hot melt glue, and the control of other functions, all can be realized through one-key switch on the touch screen easily.



型号	Model	HG4
输入电压	Input voltage	220VAC (±20%)50~60HZ
功率	Power	480W
喷胶精度	Glue sample precision	±1mm
胶样程序	Glue sample program	500个
喷胶方式	Glue spraying method	可前后预留设置 Start and end point settings
胶点	Glue sample	4种类型/4 types
喷枪数量	The number of guns	3
电眼数量	The number of electric eye	1
重量	Weight	4 Kg



型号	Model	HB6
胶粘剂最大粘度	Maximum viscosity	3000 mPas
每双程输送效率	Two-way transport efficiency	80 cm ³
压力比	Pressure ratio	6:1
气源输入要求	Gas source input	6 bar
重量	Weight	12.5 Kg
尺寸	Size	485×225×150



· 喷胶式上胶的优势 Glue-type gluing

当前，设计速度低的印刷糊箱机，大部分采用的都是滚胶方式，采用这种上胶方式，速度在150张/分以内，上胶量调节不方便，容易受到胶水粘度等因素变化造成上胶质量的差异，比如溢胶、胶量不足等。喷胶式上胶是一种先进的上胶方式，采用喷胶式上胶，不容易溢胶，胶量调节方便(通过气压进行调节)，确保上胶量准确。

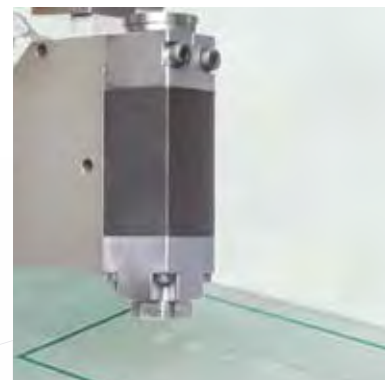
At present, the printing folder gluer machine is slow in design speed. Most of them adopt to rubber roller. With spraying gluer method, the speed is within 150 sheets/min. It is inconvenient to adjust and easy to be affected by factors such as viscosity of glue, glue overflow, insufficient glue, etc. Glue-type gluing is a more advanced gluing method. It adopts glue-type gluing, to prevent overflow, and the glue quantity is convenient to adjust (adjusted by air pressure) to ensure accurate gluing.

热熔胶应用方案

Hot melt adhesive application proposal



图形化温度控制面板
Graphical temperature control panel



一键切换点线喷涂应用

- 操作简便，控制灵活简单
Convenience Operation, Flexible control.
- 设置一周内的自动开机预热时间
Setting the auto-preheating time within a week.
- 可根据胶水特性调节温度
Adjust temperature according to glue characteristics.
- 喷枪、胶缸独立控温
Gun/pump independent control modular of temperature.
- 系统保温功能
Device insulation function.
- 超温保护
Over-temperature protection.
- 显示国际通用摄氏温度
Display commonly temperature unit.
- 故障自动停机功能
Fault shutdown feature automatically.

重量	Weight	46kg (101lb)	尺寸	Size	385(W)*600(H)*853(L)mm
容量	Capacity	10L	最大泵速 ²	Maximum pump speed	32.7kg (72lb)/h
胶泵	Glue tank	14:1活塞泵Piston pump	最大工作压力	Maximum working pressure	8.7MPa(1260psi)
熔胶速度 ¹	Melt speed	18.1kg(40lb)/h	2喉管/喷枪最大系统功率	2hoses/guns maximum system power	3150W
胶量	Amount of glue	13.7kg (30lb)	4喉管/喷枪最大系统功率	4hoses/guns maximum system power	4400W
温度调节范围	Temperature adjustment range	38-230°C (100-450°F)	输入标准电压	Input standard voltage	200-240VAC 1或3相 50/60HZ

1、以上数据基于常规EVA型热熔胶测得。根据不同热熔胶和应用参数，熔化速度可有显著变化。
The above data is based on conventional EVA hot melt adhesives. According to different hot melt adhesives and application parameters, the melting speed can vary significantly.

2、此处所示泵速系根据粘度为30,000厘泊的热熔胶测出。
The pump speed shown here is based on a hot melt adhesive with a viscosity of 30,000 centipoise.

· 功能完善 Function Perfect

有保温功能减少能耗，可设置自动开机预热，超温保护，故障自动停机。

With thermal insulation function to reduce energy consumption, you can set automatic startup preheating, overtemperature protection function in case of failure automatically stop.

· 应用广泛 Wide Application

控制灵活简单，设置一周内自动开机预热时间，可根据胶水特性调节温度，喷枪，胶缸独立控温，系统保温功能，超温保护功能，显示国际通用摄氏温度，故障停机功能，配备图形化温度控制面板。

Flexible and simple control, can be set within a week automatic startup preheating time. The temperature can be adjusted according to the glue characteristics. Spray gun, glue cylinder independent temperature control. With the system insulation function, over-temperature protection function, fault shutdown function. Display international general Celsius temperature, equipped with graphical temperature control panel.

· 售后方便 Convenient after-sales service

拥有强大的售后服务团队本地化服务，服务及时性，48小时响应客户服务，满足客户要求，服务口碑行业最佳。

Strong after-sales service team localization service, 48 hours to respond to customer service, to meet customer requirements, service reputation is the best in the industry.

· 双重调节 Double Control

效果上，胶量可通过胶泵压力和胶枪调节杆双重调节，喷胶效果良好，高速，精确

The amount of glue can be adjusted by the pressure of the glue pump and the adjusting rod of the glue gun. The spraying effect is good, high speed and accurate

· 多种配置 Multiple configurations

多种喷枪选择，且点线自由切换。

A variety of spray gun options, and the dot line free switch.

热熔胶应用方案

Hot melt adhesive application proposal



· 电子热胶枪 Electric Gun

为客户提供高速、精确的小点喷涂应用，轻松加装到机械设备上，拥有较长的使用寿命。可轻松进行实时点调整，最大限度地减少设置应用的时间。

Provide customers with high-speed, accurate small-point spraying applications, easily added to mechanical equipment, with a long service life. Real-time point adjustments can be easily made to minimize the time to set up the application.

型号	Model	DHP-301
温度范围	Temperature range	20-200C; 30-392°F
开关频率	Switching frequency	250cycle/sec; 15000cycle/min
控制气压	Air pressure	4-6bar, 58-87PSI
胶压	Adhesive pressure	80bar, 1160PSI
最高粘度	Maximum adhesive viscosity	5000mPa.s



· 反抽刮枪 Slot Coating Gun

安装为产品需要上胶的地方,进行高速精准刮胶,使用寿命高。可轻松加装在各种机器上,并进行实时调整,为产品提供高速上胶

High speed and precise gluing for products that need to be glued, with high service life. Can be easily installed on various machines and adjusted in real time for high speed gluing of products.

型号	Model	HRP-01
温度	Temperature range	max.200°C/392°F
气压	Air Pressure	145 to 80 psi (3.1 to 5.5 bar)
胶水黏度	Maximum adhesive viscosity	10, 000CPS/mPAS
最大操作速度	Maximum Operating Speed	Exceeds 3500 cycles per minute
电磁阀	Solenoid Valves	24 VDC
供电参数	Power supply parameters	220 VA±10%, 50/60 Hz
温度传感器类型	Temperature sensor type	Ni 120
最大刮涂宽度	Maximum scraping width	25mm



· 高频气动热胶枪 Pneumatic High Pressure Gun

安装尺寸小巧，可快速进行精准的点状和条状喷涂，灵活匹配不同工业领域的众多应用，广泛适用于包装和印刷工业。

The gun is suited for a precise dot and bead-line application at speed with small installation dimensions, can be flexibly used for different applications in diverse industries, widely applicable to the packaging and graphical industry.

型号	Model	FH01-Hf
温度	Temperature range	450°F (230°C) maximum
气压	Air Pressure	145 to 80 psi (3.1 to 5.5 bar)
液压压力	Working Hydraulic Pressure	≤ 1500 psi (103 bar)
最大操作速度	Maximum Operating Speed	Exceeds 7000 cycles per minute
电磁阀	Solenoid Valves	12 VDC
供电参数	Power supply parameters	220 VA±10%, 50/60 Hz
温度传感器类型	Temperature sensor type	Ni 120



· 气动热胶枪 Low pressure gun

安装尺寸小巧，可进行精准的点状喷涂，在高速喷胶中大小始终如一，灵活匹配不同工业领域的众多应用，广泛适用于包装和印刷工业。

The gun is suited for a precise dot application at speed with small installation dimensions, can be flexibly used for different applications in diverse industries, widely applicable to the packaging and graphical industry.

型号	Model	FH01-Lf
温度范围	Temperature range	20-200°C
胶压	Adhesive pressure	Max 90 bar
胶水材质	Adhesive	EVA/PSA/TPR
胶水黏度	Adhesive viscosity	500-5000mPa.s
开关频率	Switching frequency	120Hz
喷胶宽度	Jetting element width	3 mm
气源	Air connection	6 bar
电源	Supply voltage	220VAC(EN60204),50/60Hz
电磁阀电压	Supply voltage, solenoid valve	24VDC/12W
防护等级	Degree of protection	IP42(IP55 as option)

等离子表面处理器

Plasma treatment surface machine

· 预防开胶 Prevent adhesive & bonding break

增强产品表面张力值，提高附着力，预防开胶，主要处理上光，覆膜，UV等产品，减少气泡和粉尘产生。使用等离子处理后的表面，可以使用普通胶水进行粘盒，减少专用的胶水使用成本。

Improve surface tension, prevent adhesive & bonding break, it used to lamination/UV Coating etc. By using cold glue or common adhesives, it can reduce glue consumption and cost.

· 灵活配套 Flexible installation

可安装在糊盒机、喷码联线，制盒机及其他设备等联机生产。

Equipped with folder gluer machine/ink jet printer/assembly machine and making boxes machine, in processing online.

· 安全保护 Safe protections

多重保护开关，故障报警，已获得欧盟CE认证标准。

Multiple protection switch, fault alarm, has obtained the CE certification standard.

PRODUCT APPLICATION

产品应用

广泛适用于喷墨/喷码、3D打印、手机玻璃、家具、塑胶制品、汽车制造、电线电缆等表面处理工艺。针对表面有金属涂层、UV光油、覆膜的纸盒产品，通过应用等离子表面处理技术，提高产品表面附着力，应用标准的冷胶，而非昂贵的专用胶水，即能达到能提供完美粘接质量的同时，降低生产成本。

For folding cartons which are metalized, with UV coating, or with lamination, apply plasma surface treatment system with standard cold glue instead of expensive special glue, we can achieve perfect gluing quality and also reduce production cost.



· 张力佳 Best Tension

为了确保产品粘接的牢固，产品表面需要极佳的附着力才能达到预期的效果。通过应用等离子表面处理技术，对产品表面进行等离子处理，能够让材料表面达到40mn/m的表面张力值，从而让产品获得更好的粘接效果。

To ensure a firm bond, The surface of the product requires excellent adhesion to achieve the desired results. Plasma surface treatment in KQ can help the surface of material gain 40mn/m surface energy, so as to increase the standard cold glue sticking ability.

· 多种喷嘴 Kinds of nozzle

可根据产品不同，选择不同尺寸，不同类型的喷嘴，安装简单方便，即使在糊盒速度200m/min，依然可以同步对产品进行表面处理。

Different sizes and types of nozzles can be selected according to different products. The installation is simple and convenient. Even at the speed of 200m/min, the surface treatment of the product can still be synchronized.



KQ-MP10A

· 直喷式等离子 Direct injection nozzle

处理宽度6-10mm,针对光油、覆膜、UV等纸盒产品上胶边进行处理，预防开胶，减少假粘。

Handling width is 6-10mm, it used to lamination/UV coating etc, prevent adhesive & bonding break.



KQ-HP10B

· 旋转头等离子 Rotary nozzle

处理宽度30-54mm，适用于大面积处理产品，例如喷墨喷码、手机玻璃，3D打印、木材家具等领域，经处理后的产品表面粘接更牢固。

Handling width is 30-54mm, it is mainly used for inkjet printing/glass/3D Printing/wood processing/furniture,improving the surface adhesion of products.

等离子表面处理器

Plasma treatment surface machine

· 直喷式等离子 Direct injection nozzle



KQ-HP10A



KQ-HP20A



KQ-HP30A



KQ-MP10A

型号 Model	KQ-HP10A	KQ-HP20A	KQ-HP30A	KQ-MP10A
应用范围 Application Range	直线盒 Linear carton	直线盒、两侧黏边、大尺寸上胶边 Linear carton, double-wall carton, large-size gluing flap	直线盒、两侧黏边、大尺寸上胶边、自动锁底盒 Linear carton, double-wall carton, large-size gluing flap, automatic lock bottom carton	直线盒 Linear carton
喷头数量 Glue Head Quantity	1	2	3	1
处理宽度 Handling Width	6-10mm	6-10mm × 2	6-10mm × 3	6-10mm
输入电源 Input power	AC220V(±20%)	AC220V(±20%)	AC220V(±20%)	AC220V(±20%)
输入气压 Input air	0.1-0.2Mpa	0.3-0.4Mpa	0.4-0.6Mpa	0.1-0.2Mpa
总功率 Total Power	800VA	800VA × 2	800VA × 3	800VA
重量 Weight	50KG	55KG	60KG	20KG
外形尺寸 Overall Dimension	600(W)*400(D)*1000(H)	600(W)*400(D)*1000(H)	600(W)*400(D)*1000(H)	230(W)*580(L)*380(H)

· 旋转头等离子 Rotary nozzle



KQ-HP10B



KQ-HP20B



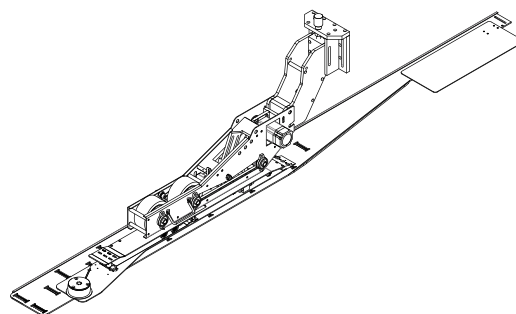
KQ-HP30B



KQ-MP10B

型号 Model	KQ-HP10B	KQ-HP20B	KQ-HP30B	KQ-MP10B
应用范围 Application Range	喷码设备, 线缆制造, 汽车制造, 3C电子制造等应用领域 Inject printing machine, Cable industry, Automobile industry, 3C Electronic industry, etc.			
喷头数量 Glue Head Quantity	1	2	3	1
处理宽度 Handling Width	30~54mm	30~54mm x 2	30~54mm x 3	30~54mm
输入电源 Input power	AC220V(±20%)	AC220V(±20%)	AC220V(±20%)	AC220V(±20%)
输入气压 Input air	0.1-0.2Mpa	0.3-0.4Mpa	0.4-0.6Mpa	0.1-0.2Mpa
总功率 Total Power	800VA	800VA x 2	800VA x 3	800VA
重量 Weight	50KG	55KG	60KG	20KG
外形尺寸 Overall Dimension	600(W)*400(D)*1000(H)	600(W)*400(D)*1060(H)	600(W)*400(D)*1000(H)	230(W)*560(L)*380(H)

加装式胶带贴头 Tape applicator



· 双面胶/透明胶/离型纸贴头 Double sided tape/scotch tape/Silicone tape applicator

贴双面胶尺寸	Double-sided tape size	5-35/10-60/20-80mm
装胶卷尺寸直径	Film size diameter	90-400mm
胶卷内径尺寸	Film inner diameter	76mm
贴胶长度	Adhesive length	30-9000mm
速度	Speed	5-100m/min(视实际运行情况)
两段之间最小间距	Minimum spacing between two segments	30mm
贴胶精度	Processing precision	Front and rear ± 2 mm
额定工作功率	Rated operating power	12.7W
重量	Weight	7.5KG

· 易撕带/贴头 Tear tape applicator

贴易撕带尺寸	Tear tape size	3-15mm
装胶卷尺寸直径	Film size diameter	35-160mm
胶卷内径尺寸	Film inner diameter	30mm
贴胶长度	Adhesive length	50-9000mm
速度	Speed	5-100m/min(视实际运行情况)
两段之间最小间距	Minimum spacing between two segments	30mm
贴胶精度	Processing precision	Front and rear ± 2 mm
额定工作功率	Rated operating power	12.7W
重量	Weight	7.5KG

· 贴双面胶/易撕带大卷送料装置 Tape application upwinder device

可放至万米长的胶带卷料，主要解决双面胶、易撕带频繁更换料带问题，减少换料上料的时间，提高生产效率。Regarding to double side tapel tear easy tape feed & change materials, in processing, save productive time and save labor cost.

型号	Model	DJFL6-V1
输送带最大速度	Max speed of conveyor	120m/min
盘内芯直径	Tape wheel of inner diameter	152mm
盘最大外径	Tape wheel of MAX outer diameter	400mm
料盘最大厚度	ape wheel of MAX thickness	170mm
机器尺寸	Device of size	870mm*818mm*370mm
控制电箱尺寸	Drive unit of size	355mm*262mm*177mm
电源频率	Power frequency	50/60Hz
电源电压	Power voltage	AC220V
最大用电量	Max power of supplier	400w

· 内侧贴头 Inner edge tape applicator

加装在钉箱机上，纸箱钉箱后内侧贴胶，防止钉口刮花产品。

Installed on the stitching machine ,pasting tape on the inner of courraged boxes,Avoid scratching and rusting by nail points.

贴胶带尺寸	Tear tape size	10-35mm
装胶卷尺寸直径	Film size diameter	90-220mm
胶卷内径尺寸	Film inner diameter	76mm
贴胶长度	Adhesive length	30-9000mm
速度	Speed	5-60m/min(视实际运行情况)
两段之间最小间距	Minimum spacing between two segments	30mm
贴胶精度	Processing precision	Front and rear ± 5 mm
额定工作功率	Rated operating power	12.7W
重量	Weight	30KG

B系列全自动贴胶平台

B Series tape application machine

· 机型特点 Features

整机为轻型机设计，主要针对卡纸、卡盒，信封袋、快递袋等产品贴双面胶，透明胶，湿水胶带和易撕带等。

Designed as a light machine ,Mainly pasting for carton boxes ,envelopes ,ecommerce bags etc with double-sided tape and easy tape.



机器型号	Model	TS-800B2	机器占地面积	Floor area	3100mm*1470mm
配置贴头数量	Stickers quantity	1-4个	电源频率	Power frequency	50/60Hz
双面胶最大宽度	Max width of tape	5-35,10-60,20-80mm	电源电压	Power voltage	AC220V
盒子最小尺寸	Min size of box	100mm*100mm	给纸电机功率	Feeding motor power	0.75kw
盒子最大尺寸	Max size of box	800mm*1200mm	主电机功率	Main motor power	1.5kw
输送带最大速度	Max speed of conveyor	80m/min	控制器功率	Controller power	0.4kw
机器总重	Weight	650kg	总功率	Machine total power	2.65kw
贴胶误差	Tolerance	±2mm			



机器型号	Model	TS-1100B2	机器占地面积	Floor area	3100mm*1770mm
配置贴头数量	Stickers quantity	1-4个	电源频率	Power frequency	50/60Hz
双面胶最大宽度	Max width of tape	5-35,10-60,20-80mm	电源电压	Power voltage	AC220V
盒子最小尺寸	Min size of box	100mm*100mm	给纸电机功率	Feeding motor power	0.75kw
盒子最大尺寸	Max size of box	1100mm*1200mm	主电机功率	Main motor power	1.5kw
输送带最大速度	Max speed of conveyor	80m/min	总功率	Machine total power	2.65kw
贴胶误差	Tolerance	±2mm			



机器型号	Model	TS-1450B2	机器占地面积	Floor area	3200mm*2120mm
配置贴头数量	Stickers quantity	1-4个	电源频率	Power frequency	50/60Hz
双面胶最大宽度	Max width of tape	5-35,10-60,20-80mm	电源电压	Power voltage	AC220V
盒子最小尺寸	Min size of box	300mm*300mm	给纸电机功率	Feeding motor power	0.75kw
盒子最大尺寸	Max size of box	1100mm*1450mm	主电机功率	Main motor power	1.5kw
输送带最大速度	Max speed of conveyor	80m/min	总功率	Machine total power	2.65kw
贴胶误差	Tolerance	±2mm			

B系列全自动贴胶平台

B Series tape application machine



· 稳定&高效 Stable & speedy

采用优质原材料及加厚墙板设计，使用著名品牌皮带、电机等关键元器件。保证机器高速运行下，能长久稳定。

Adopt high level of raw materials and thickened wallboard design, famous brands of belt motor and other key components. Ensure that the machine can be stable for along time under high speed running.



· 操作简单 Simplicity of operator

采用C+技术，连接各部件传动，智能匹配，一键式启动生产。

Based on C+ technology ,develop all of drive units, intelligent control,One-key start can be productive.



· 灵活搭配 Variety of device matching

在平台上可以装配刮胶&离型纸装置，透明胶带贴头，双面胶贴头，易撕带贴头或定制组件。

Equipped with slot coating guns & silicone tape applicator, scotch applicator ,double sided tape applicator ,tear tape applicator ,folded device etc ,to be customized for clients.

· 应用领域 Application field

适用于印刷盒子，快递袋、网购箱、烟酒、礼品、工艺品等行业。

Applicable for boxes, delivery bags, corrugated boxes, and smokelwine boxes, gift boxes,artware adhesive.



B系列全自动贴标平台

B Series tape application machine

· 机型特点 Features

整机为轻型机设计，主要针对卡纸、卡盒，信封袋、快递袋等产品贴标。

Designed as a light machine ,Mainly pasting for carton boxes ,envelopes ,bags etc with labeling.



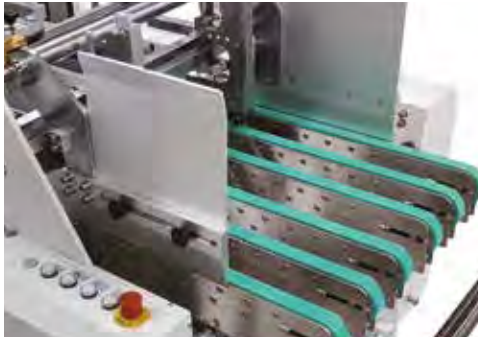
机器型号	Model	TS-800B2	主电机功率	Main motor power	1.5kw
配置贴头数量	Stickers quantity	1-4个	控制器功率	Controller power	0.4kw
双面胶最大宽度	Max width of tape	5-35,10-60,20-80mm	标签最小尺寸	Min label size	25*8mm
盒子最小尺寸	Min size of box	100mm*100mm	标签最大尺寸	Max label size	550*600mm
盒子最大尺寸	Max size of box	800mm*1200mm	料盘最小内径	Min inner diameter of tray	76mm
输送带最大速度	Max speed of conveyor	80m/min	料盘最大内径	Max inner diameter of tray	300mm
机器总重	Weight	650kg	工作最大速度	Max speed	50m/min
机器占地面积	Floor area	3100mm*1470mm	功率	Power	0.75W
电源频率	Power frequency	50/60Hz	贴标精度	Labeling accuracy	±2mm
电源电压	Power voltage	AC220V	是否能加装糊盒机	Add to folder gluer machine	能
给纸电机功率	Feeding motor power	0.75kw	贴头占地面积	Floor area	L600mm*W350mm*H700mm
总功率	Machine total power	2.65kw	贴头安装面积	Installation area	1000mm*1000mm

· 应用领域 Application field

适用于印刷盒子，快递袋、网购箱、烟酒、礼品、工艺品等行业。

Applicable for boxes, delivery bags, corrugated boxes, and smoke/wine boxes, gift boxes,artware label.





· 稳定&高效 Stable & speedy

采用优质原材料及加厚墙板设计，使用著名品牌皮带、电机等关键元器件。保证机器高速运行下，能长久稳定。

Adopt high level of raw materials and thickened wallboard design, famous brands of belt motor and other key components. Ensure that the machine can be stable for along time under high speed running.



· 操作简单 Simplicity of operator

采用C+技术，连接各部件传动，智能匹配，一键式启动生产。

Based on C+ technology ,develop all of drive units,intelligent control,One-key start can be productive.



· 安装方便 Easy Installation

在平台上可根据需求任意调整贴标部位让贴标更高效，更稳定。

The labeling parts can be adjusted according to the demand on the platform to make labeling more efficient and stable.

C系列全自动贴胶平台

C Series tape application machine

· 机型特点 Features

增加了纠偏部位，提高产品贴胶精度的同时，还能拓展刮胶贴离型纸等多种功能，满足客户更多的定制化需求。

Equipped with alignment unit ,improve the product accuracy in processing,and expand to install hot melt gun and release tape applicator ,and make sure customers' demands to customize d.



机器型号	Model	TS-800C2	机器占地面积	Floor area	4200mm*1455mm
配置贴头数量	Stickers quantity	1-4个	电源频率	Power frequency	50/60Hz
双面胶最大宽度	Max width of tape	5-35,10-60,20-80mm	电源电压	Power voltage	AC220VAC380V(选配)
盒子最小尺寸	Min size of box	100mm*100mm	给纸电机功率	Feeding motor power	0.75kw
盒子最大尺寸	Max size of box	800mm*1200mm	主电机功率	Main motor power	1.5kw
输送带最大速度	Max speed of conveyor	100m/min	控制器功率	Controller power	0.4kw
机器总重	Weight	720kg	总功率	Machine total power	2.65kw
贴胶误差	Tolerance	±2mm			



机器型号	Model	TS-1100C2	机器占地面积	Floor area	4200mm*1755mm
配置贴头数量	Stickers quantity	1-4个	电源频率	Power frequency	50/60Hz
双面胶最大宽度	Max width of tape	5-35,10-60,20-80mm	电源电压	Power voltage	AC220V/AC380V(选配)
盒子最小尺寸	Min size of box	100mm*100mm	给纸电机功率	Feeding motor power	0.75kw
盒子最大尺寸	Max size of box	1100mm*1200mm	主电机功率	Main motor power	1.5kw
输送带最大速度	Max speed of conveyor	100m/min	总功率	Machine total power	2.65kw
贴胶误差	Tolerance	±2mm			



机器型号	Model	TS- 1450C2	机器占地面积	Floor area	4200mm*2105mm
配置贴头数量	Stickers quantity	1- 4个	电源频率	Power frequency	50/60Hz
双面胶最大宽度	Max width of tape	5- 35,10- 60,20- 80mm	电源电压	Power voltage	AC220V/AC380V(选配)
盒子最小尺寸	Min size of box	300mm*300mm	给纸电机功率	Feeding motor power	0.75KW
盒子最大尺寸	Max size of box	1100mm*1450mm	主电机功率	Main motor power	2.2KW
输送带最大速度	Max speed of conveyor	100m/min	总功率	Machine total power	3KW
贴胶误差	Tolerance	±2mm			

C系列全自动贴胶平台

C Series tape application machine



· 稳定&高效 Stable & speedy

采用优质原材料及加厚墙板设计，使用著名品牌皮带、电机等关键元器件组件。保证机器高速运行下，能长久稳定。

Adopt high level of raw materials and thickened wallboard design, famous brands of belt/motor and other key components. Ensure that the machine can be stable for along time under high speed running.



· 校正部 Alignment

使每个出纸偏差不一样的纸盒到了校正部后都能被有效校正，纠正出纸后的偏差，利于纸盒后续的精准贴胶，拉规可根据盒型选择左边或者右边。

Each carton with different paper deviation can be effectively guided after reaching the Alignment, which is conducive to the subsequent precision glue of the carton. You can choose the left or right side according to the box type



· 操作简单 Simplicity of operator

采用C+技术，连接各部件传动，智能匹配，一键式启动生产。Based on C+ technology ,develop all of drive units, intelligent control,One-key start can be productive.



· 灵活搭配 Variety of device matching

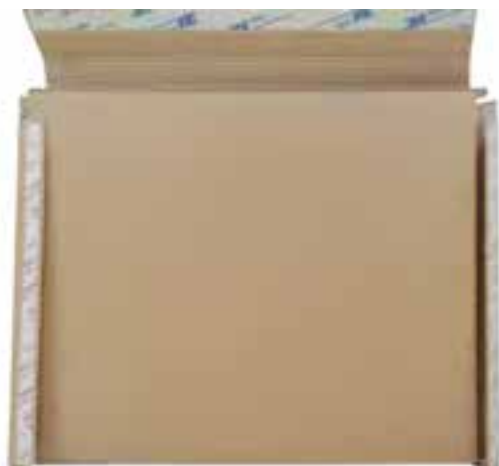
在平台上可以装配刮胶&离型纸装置，透明胶带贴头，双面胶贴头，易撕带贴头或定制组件。

Equipped with slot coating guns & silicone tape applicator, scotch applicator ,double sided tape applicator ,tear tape applicator ,folded device etc ,to be customized for clients.

· 应用领域 Application field

适用于印刷盒子，快递袋、网购箱、烟酒、礼品、工艺品等行业。

Applicable for boxes, delivery bags, corrugated boxes, and smokelwine boxes, gift boxes,artware adhesive.



三角贴标设备

Triangle labeling equipment

· 机型特点 Features

针对折叠盒开发的一款全新的三角贴标设备。

A brand new triangle labeling machine developed for folding boxes



机器型号	Model	SJ-600S3	机器占地面积	Floor area	1600mm*5400mm
配置贴头数量	Stickers quantity	1-2个	电源频率	Power frequency	50/60HZ
配置贴头数量	Number of stickers	2个	电源电压	Power voltage	AC380V
双面胶最大宽度	Max width of tape	5-35、10-60、20-80、20-100mm	给纸电机功率	Feeding motor power	0.2kw
三角标尺寸	Triangle size	45-90mm	纠边功率	Alignment motor power	0.75kw
盒子最小尺寸	Min size of box	25*8mm	贴标头功率	Labeling head power	0.4kw+0.4kw+0.75kw (旋转贴标)
盒子最大尺寸	Max size of box	550*600mm	贴标头功率	Labeling head power	0.75kw (直贴贴标)
输送带最大速度	Max speed of conveyer	25m/min (旋转贴标)	贴胶功率	Applicator motor power	2.2kw
输送带最大速度	Max speed of conveyer	40m/min (直贴贴标)	鼓风机功率	blower power	1.5kw+1.5kw
输送带最大速度	Max speed of conveyer	100m/min (双面胶贴头)	收纸功率	Paper delivery motor power	0.4kw
贴标精度	Accuracy	±2mm	总功率	Machine total power	9.0kw
机器总重	Weight	800kg	1、更大尺寸可根据客户需求定制 Bigger size can be customized with according to clients's requests		



· 给纸部 Paper feed section

采用成熟的摩擦送纸方式进行送纸，由8条优质的加厚皮带加上高效出纸刀，配合电动堆纸震动装置，保证准确、顺畅的产品输送。给纸部分各机构的调节方便、简单、极大缩短了校机和换款时间。

It adopts advanced friction feeding method to feed paper, with 6 high-quality thickened belts plus high-efficiency paper-cutting knife to ensure accurate and smooth product transportation. It is easy to adjust the feeding parts, simple, greatly reducing the school and change the time.



· 纠偏部 Correction department

由多根滚筒组成的纠偏机构，操作简单方便，纠偏更精准。

By the composition of the roller with the correction mechanism, the operation is simple and convenient, more accurate correction.



· 贴胶部 Sided adhesive tape

创新的贴胶技术，能适应大部分型号的三角标胶带，采用隔空气压贴胶模式，在高速运转中实现精准贴胶，且不会对产品本身造成损伤。

Innovative sticking technology, can adapt to most types of triangular tapes, using air-sealed adhesive Mode, to achieve precise glue application in high-speed operation, and will not cause damage to the product itself.



· 控制系统 Control system

采用国际通用的人机对话模式，各种设置在界面上一目了然，生产过程中可根据实际情况随时进行更改调节，更增加的数据保存模式，减少了后续生产的调机设置时间。

The use of international common man-machine dialogue mode, a variety of settings at the interface at a glance, the production process can be adjusted according to the actual situation at any time to change, more data retention mode, reducing the follow-up production of the machine set up time.



· 接纸部 Paper delivery

可根据自身情况，灵活选择收纸方式。堆叠积盒方式或连续运转积盒方式，配备高精度计数电眼实行电子计数模式，方便生产计数以及包装。

According to their own situation, the flexibility to choose to receive paper. Stacking box mode or continuous operation plot box mode, equipped with high-precision counting electric eye to implement electronic counting mode, to facilitate the production count and packaging.

三角贴标设备

Triangle labeling equipment

· 应用领域 Application field

适用于折叠盒针对三角标等贴标产品。

It is suitable for folding boxes for labeling products such as triangle labels.





U型平台

U Series tape application machine

· 机型特点 Features

针对瓦楞箱，尤其是网购快递箱贴双面胶，易撕带，透明胶，湿水胶带等需求而研发。

Equipped with alignment unit ,improve the product accuracy in processing,and expand to install hot melt gun and release tape applicator ,and make sure customers' demands to customize d.



机器型号	Model	TS-1450U2	机器占地面积	Floor area	5600mm*3900mm
配置贴头数量	Stickers quantity	1-4个	电源频率	Power frequency	50/60Hz
双面胶最大宽度	Max width of tape	5-35,10-60,20-80mm	电源电压	Power voltage	AC380V
盒子最小尺寸	Min size of box	300*300mm	给纸电机功率	Feeding motor power	1.5kw
盒子最大尺寸 ¹	Max size of box	1100*1450mm	纠边功率	Alignment motor power	0.75kw
输送带最大速度	Max speed of conveyor	120m/min	贴胶功率收	Applicator motor power	2.2kw
机器总重	Weight	1820kg	纸功率	Paper delivery motor power	0.4kw+0.75kw
贴胶精度	Accuracy	±2mm	总功率	Machine total power	5.8kw

1、更大尺寸可根据客户需求定制 Bigger size can be customized with according to clients's requests



· 给纸部 Paper feed section

采用成熟的摩擦送纸方式进行送纸，由8条优质的加厚皮带加上高效出纸刀，配合电动堆纸震动装置，保证准确、顺畅的产品输送。给纸部分各机构的调节方便、简单、极大缩短了校机和换款时间。

It adopts advanced friction feeding method to feed paper, with 6 high-quality thickened belts plus high-efficiency paper-cutting knife to ensure accurate and smooth product transportation. It is easy to adjust the feeding parts, simple, greatly reducing the school and change the time.



· 纠偏部 Correction department

由多根滚筒组成的纠偏机构，操作简单方便，纠偏更精准。

By the composition of the roller with the correction mechanism, the operation is simple and convenient, more accurate correction.



· 贴胶部 Sided adhesive tape

创新的贴胶技术，能适应绝大部分型号的胶带，采用隔空切断的模式，不会对产品本身造成损伤，双面胶切口为齿口型，可根据实际情况，选配贴双面胶/易撕带/透明胶/离型纸装置。

Innovative double-sided adhesive technology, can adapt to most of the models of double-sided adhesive, cut off the use of the model, will not cause damage to the product itself, double-sided adhesive incision for the tooth mouth, according to the actual situation, With double-sided adhesive device. It can apply for double sided tape, silicone tear easy tape



· 控制系统 Control system

采用国际通用的人机对话模式，各种设置在界面上一目了然，生产过程中可根据实际情况随时进行更改调节，更增加的数据保存模式，减少了后续生产的调机设置时间。

The use of international common man-machine dialogue mode, a variety of settings at the interface at a glance, the production process can be adjusted according to the actual situation at any time to change, more data retention mode, reducing the follow-up production of the machine set up time.



· 接纸部 Paper delivery

可根据自身情况，灵活选择收纸方式。堆叠积盒方式或连续运转积盒方式，配备高精度计数电眼实行电子计数模式，方便生产计数以及包装。

According to their own situation, the flexibility to choose to receive paper. Stacking box mode or continuous operation plot box mode, equipped with high-precision counting electric eye to implement electronic counting mode, to facilitate the production count and packaging.

U型平台

U Series tape application machine

· 应用领域 Application field

适用于瓦楞纸品，快递箱、烟酒、礼品、印刷盒子、工艺品等行业。

Applicable for carton boxes、envelopes、E-commerce packages、tobacco packages、erecting boxes etc .







SOUTH-EAST EUROPE REPRESENTATIVE:
PREPRESS PRINT DOO

+381 64 1340740
ctp@cron.rs
www.cron.rs
SERBIA - BELGRADE

+385 99 4477468
ctp@cron.com.hr
www.cron.com.hr
CROATIA - ZAGREB
